

BRANCH CUTTINGS

Issue 36 - October 2011

This branch is affiliated with the Royal Australian Historical Society & National Trust of Australia (NSW)

THE VERNAL VERNACULAR by James Quoye

As an architect I usually cannot confess a secret inhabiting my heart: I long for the pleasing disorder that grows only with time, for the personal expression of the individual who has occupied the same dwelling and garden for many years, and imparted to their design a sensibility that is impossible to duplicate.

Seven years have passed since we moved to *Minley* in Newtown, Sydney. The simple weatherboard cottage was built in the 1880s for an engraver named John Davis. The house sits three miles south west of Macquarie's obelisk; a landscape element designed by Francis Greenway in 1818 from which all distance in the colony was measured. The cottage is a prosaic form of house that presents to the street a central door with two flanking windows, indicative of a four-roomed layout of modest proportions. Originally the cottage was erected on a cow pasture with no street address. The house falls within the land grant made to William Bligh in 1806 by the outgoing Governor King. In turn the land passed to Maurice

Charles O'Connell who married Mary, one of Bligh's six daughters; consequently, this area of Newtown was once called O'Connell Town. In about 1988, our house was conserved and extended by an esteemed architect whose practice



Minley - street presentation

was engaged mostly by the well-heeled to the east of the obelisk. A master of the vernacular, he ingeniously and gently remodeled the house for his client and friend, a much-admired playwright who died prematurely. As a result of this sad event, the care of the garden had been abandoned for a few years before we took governance over the house and



Espaliered Meyer lemon

garden. The small house required very little attention; a lick of paint. The rear garden with a brilliant north-easterly aspect was enclosed by very high timber walls and divided into three parts: the upper terrace, with a Chinese tallow tree, the central garden and lower terrace that share a very vertical *Jacaranda* in the northern corner. These areas were connected by an unyielding geometric device of a path based on an expanded key pattern that meandered through the central section. I imagined it had a quasi-monastic nature and decided to accept the layout as a palimpsest to be amended slightly, with the ambition of knocking back the order with a chaos of verdure;

CHAIRMAN'S MESSAGE

Dear members & friends

I hope members support the Heritage Rose Festival which is being held in the *Rumsey Rose Garden in Parramatta Park* on Sunday 16th October. Stalls by AGHS, Heritage Roses Australia and the Nursery at Camden Park estate will offer plants and advice. Food and live music will be available and the roses will be peaking. Parramatta Park is now listed on the World Heritage List as one of Australia's eleven serial Convict Heritage sites.

Northern NSW members have been touring the New England garden history exhibition to the Inverell Art Gallery over July - August. Each 'showing' flushes out more photographs from a responsive public. Research by member Liz Chappell continues on Elsa Lowrey's garden *Highwoods*, bequeathed to the Glen Innes Museum. Liz has painstakingly transcribed Elsa's diaries on the garden and designer Paul Sorensen's visits. *Highwoods* is not in Richard Ratliffe's 1990 book on Sorensen and with *Balaclava*, brings my count of his Glen Innes gardens to two. Northern members are busy planning details of the 2013 conference, which will be held in Armidale.

August saw a number of members travel to a capacity national conference in Maryborough, with a tour of country properties to and from Brisbane and an optional tour to Fraser Island for some. It was fascinating to learn more of the major role this port and its region have played in Queensland's development – and as an immigration port for thousands arriving in Australia. Evidence of recent flooding and persistent drought in other areas reminded delegates that gardening here is far from easy. Maryborough's delightful Queen's Park was right next door to the venue and a major drawcard.

July saw Sydney members visit the *Eastern Suburbs Memorial Park*, admiring remnant gardens of the 1929 *Bunnerong Power Station* and the 1970s *Memorial Rest Park* where some of Sydney's earliest settlers' remains were moved (making way for Sydney Town Hall and Central Station). We glimpsed 1830s+ *Chinese market gardens* under threat from cemetery expansion, & toured an exhibition on explorer La Perouse in the L.P. museum and outside the site of a 1788 *French garden* – our oldest colonial industrial heritage site? The Branch is writing to the NSW National Parks & Wildlife Service who manages the site offering funding to allow replanting of four *Araucaria* trees to bring greater prominence to the memorial site. This proposal will help implement recommended actions in a site interpretation plan on recent public exhibition.

The Branch has written to the owner of *Wynstay* – one of Mount Wilson's most significant hill station gardens – offering some funding assistance for tree work after disastrous storms felled a number of major mature trees in recent months.

We are also talking to the managers of *Varuna*, the former writer Eleanor Dark's house and garden and now a writers' centre in Wentworth Falls about preparing a conservation plan for its garden, and of *Mamre*, the Rev. Samuel Marsden's family farm house at St. Marys / Orchard Hills about possibly establishing a heritage rose garden there.

The Branch remains active in advocacy for historic landscape issues, writing to:

- Randwick City Council and the Minister for Planning opposing the proposed rezoning of the *Chinese Market Gardens* at Matraville adjoining the *Eastern Suburbs Memorial Park* – i.e. allowing cemetery expansion over 150 year old continuously-cropped gardens;
 - Sydney City Council seeking their support for the current nomination for NSW State Heritage Register listing of *Hyde Park*, our oldest public park;
 - the Northern NSW sub-branch has written to Armidale-Dumaresq Shire Council about the proposed subdivision layout of historic *Hopetoun Park* on the outskirts of Armidale;
 - The Heritage Council of NSW supporting expansion of the existing NSW State Heritage Register listing of *Strickland House* at Vacluse to include its whole remnant landscape estate – an overseas university is showing interest in a campus on the site. This is one of the last great harbour-side villa estates still in reasonably intact form;
 - a State Parliamentary Inquiry into Coal Seam Gas exploration and mining, seeking greater separation from sensitive environmental lands, residential areas, productive agricultural and horticultural lands and greater precautions to ensure its careful regulation – experiences in the USA and Queensland do not augur well;
- We were also approached by an owner of a Paul Sorensen-designed c.1940 garden *Olympia* at Cliff Drive, Katoomba – concerned about the sale and survival of an adjoining lot, whose garden was also designed by Sorensen. Gardens are ephemeral things and often absolutely rely on sympathetic, understanding owners to survive. Changes of ownership bring risk as well as opportunity. Perhaps the Society can help find a sympathetic new owner for one or both of these properties.

Stuart Read. Tel: 9326 9468 or email: stuart1962@bigpond.com

NEW MEMBERS

The Branch would like to extend a warm welcome to the following new local members:

Pamela Bennett & Alan Olsen, Deidre & Ian Harman,
Robin & Graham Lockhart, Brian Thomas & Scott Carter

AGHS FORTHCOMING EVENTS



Berry Court House

NOVEMBER

Date: 5th/6th November

Event: Joint event with ACT/Monaro and Riverina Branch. Self drive weekend tour of gardens at Berry.

Cost: Members \$100, Non members \$130. Boxed lunches and teas for both days included More details P. 7

Places very limited. Early bookings essential

Date: Wednesday 9th November 6pm for 7pm - 8.30pm

Event: Illustrated talk by English Landscape Architect, Charlotte McLean, *English Heritage's 'Landscapes at Risk'*

Venue: Annie Wyatt Room, National Trust Centre, Observatory Hill.

Cost: AGHS members: \$20 Guests: \$30 includes light refreshments. Bookings essential. More details Page 6.

DECEMBER

Date: Sunday 4th December 4.30pm - 8pm

Event: Christmas Get-Together

Venue: Dr Pamela Bell has offered her house and garden in Mosman as a venue for the Garden History Christmas party. This modest house and garden c.1949 were probably designed by the original owner and his wife who was a keen gardener. Pamela and her late husband bought the house in 1963. The great attraction of this house is its situation on a cliff looking northeast over Middle Harbour with only a small strip of bush between the house and the sea giving panoramic views from every room & the large deck. The layout of the garden has not been changed, the rocky sea side site containing original azaleas, camellias and orchids now supplemented by some natives. The original rockery has made way for a series of sandstone terraces. Address supplied on booking

Cost: Members \$20 Guests \$30 includes light refreshments. Bookings essential

FEBRUARY 2012

Date: Wednesday 22nd February 6.00pm for 7pm - 8.30pm

Event: Talk by Stuart Read *Bidwill – a botanist cut short.*

Venue: Annie Wyatt Room, National Trust Centre, Observatory Hill

Cost: Members \$20 Guests \$30 includes light refreshments. Bookings essential.

Bookings & enquiries for all events above: Telephone: Jeanne Villani: 9997 5995 or Email: Jeanne@Villani.com

PLEASE NOTE: Payment confirms Booking. Payments for all events must be made prior to the event by cheque to Australian Garden History Society and mailed to: Jeanne Villani, 90 Cabbage Tree Road, Bayview, NSW, 2104 or by **Internet** bank transfer to: Australian Garden History Society Sydney & Northern NSW Branch, ANZ Bank, Centrepoint Branch. BSB 012 040 Account 1017 62565 Payment must include your **name** and the **function** you are booking for.

An Individual Membership entitles only that member to the Members Rate.

Members with Household Membership are entitled to Members Rate for anyone living within that household

Refunds for cancellations will not be made if less than 48 hours notice is given.

FORTHCOMING EVENTS FOR THE NORTHERN NSW BRANCH

Sunday 9th October Glen Innes Museum (cnr West Ave. & Fergusson St, Glen Innes) to view Elsa Lowrey's diaries of *Highwoods* garden and a possible visit to *Stonehenge Station* en route

Sunday 27th November – Christmas get together at Helen Nancarrow's home, 1 Park Road, Armidale, NSW

OTHER EVENTS OF INTEREST

October 12th: Native garden spectacular: visit the 30 acre *Silky Oaks* at Oakdale, home of Grevillea expert and author Peter Olde and 1.5 acre *Black Stump Natives* at Brownlow Hill, 8.30-5.30, \$70/60 Friends, p: 9231 8182 / e: friends@rbgsyd.nsw.gov.au

October 16th: Parramatta Park Heritage Rose Festival, Rumsey Rose Garden, off cnr. Pitt & Macquarie Streets, Parramatta, 10am-4pm, free, parking inside, five minutes from station, various stalls with roses and other plants, food, coffee, music.

The heritage rose beds will be in full bloom, more info: p: 8833 5000 / www.ppt.nsw.gov.au

October 29th: Vegie garden basics, Elizabeth Farm horticulturist (& AGHS member) Anne Steng discusses establishing and keeping a productive vegie garden, plants and seeds available to take home, 10am-12pm, \$30/20 HHT members, p: 8239 2211 / or email: members@hht.net.au

November 6th: Rookwood Necropolis heritage walking tour – Wesleyan/Protestant/Jewish sections / *Funerary Symbolism and 19th Century landscapes*. Friends of Rookwood Necropolis, info/bookings: Robyn Hawes, 9889 3899

November 16th: *Orchids for Sydney gardens*, Andrew Price of Jungle Horticulture explains which orchids will do well and how to grow them, includes notes, 10.30am-12pm, \$27/20 Friends, p: 9231 8182 / e: friends@rbgsyd.nsw.gov.au

Open now until November 27th: Beauty from Nature – art of the Scott Sisters, exhibition of botanical and entomological water-colors of Harriet & Helena Scott, 2 of Australia's finest female scientific illustrators. Australian Museum, College St., 9.30am-5pm daily. Entry free.

More email addresses please! If you are receiving this newsletter in its printed form we are wondering whether perhaps you have an email address where we could send it. **Pluses for you** - emailed - it is in full colour **Pluses for AGHS** - it saves the cost of printing and postage - better spent on conservation projects - Jeanne would love to hear from you at Jeanne@Villani.com

Don't forget to have a look at our website -
www.gardenhistorysociety.org.au It can now be used to check for updated details of events,
membership renewals including by direct debit, gift purchases and routine enquiries.

THE ISABEL FIDLER MEMORIAL GARDEN by James Quoyle

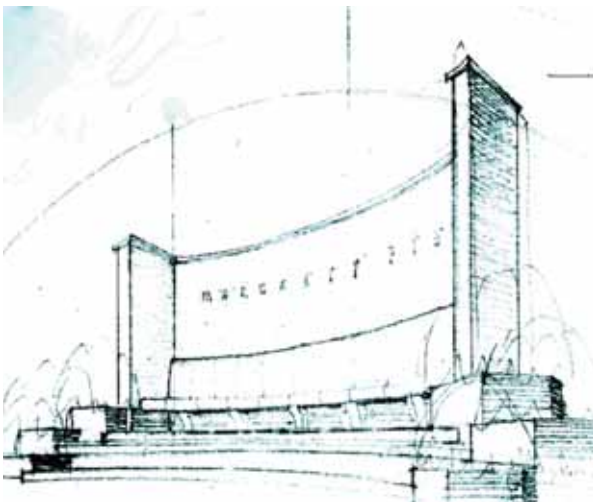


The Isabel Fidler Memorial

Amid the assertive architecture of the *University of Sydney* are a number of understated gardens, courtyards and memorials. At the heart of the old Camperdown campus, in the shadow of the soaring main quadrangle and cradled amid the gothic revival fabric rests a memorial dedicated to Isabel Margaret Fidler, M.B.E., B.A. : a gardening trove that remains almost unchanged from its inception. However, beyond Miss Fidler's name and her dates, there is little to indicate the story underlying this sleeping beauty. Isabel Fidler (1869-1952) is remembered for her pioneering work as 'Tutor to Women Students' and the connection with the admission of women to tertiary studies that mark a significant shift in Australian culture. The memorial is the largest on campus and contributes to the outstanding streetscapes of Manning and Fisher Roads. In addition, the garden reflects the values placed on the landscape quality of the *University of Sydney* as espoused in the 1920 master plan of Professor Leslie Wilkinson (1882-1973) and fostered by Eben Gowrie Waterhouse (1881-1977).

Wilkinson made recommendations to the Senate on improvements

to the campus that included keeping roads narrow like park drives, planting trees, placing wires underground, providing fences and keeping out grazing animals. His overriding ambition was to introduce '*a sense of unity, order, convenience and beauty into the University quarters, treated as a whole.*' Wilkinson believed that '*the peaceful order of good buildings in beautiful surroundings is of paramount importance in creating the right environment for university life.*' He envisaged vistas created by carefully placed axes, with sequences of enclosed and open courts.



Early sketch of Memorial by Denis Winston

Digging through the university's archives, the putative designer of the memorial garden is Professor A. Denis Winston (1908-1980), architect and Foundation Professor of Town and Country Planning: if so, it is a rare example of his built work. After Miss Fidler's death, in June 1952, an appeal for funds was made in October in a general letter to friends and colleagues outlining her long-standing association with the university from 1895 to 1952, it recalls Miss Fidler's love of the university, her love of a garden and especially blue-coloured flowers. A design drawing of the proposed memorial garden was made by Arthur Baldwinson to accompany the appeal. Baldwinson (1909-1969) studied architecture at *Gordon Institute of Technology*, Geelong, Victoria. In 1930 he was admitted to the Royal Victorian Institute of Architects. '*Having trained at a technical college, Baldwinson was very anxious to please and was often pushed around.*'



Baldwinson's drawing of Christ's College Cambridge competition with Gropius 1935

During the Depression years he travelled to London and

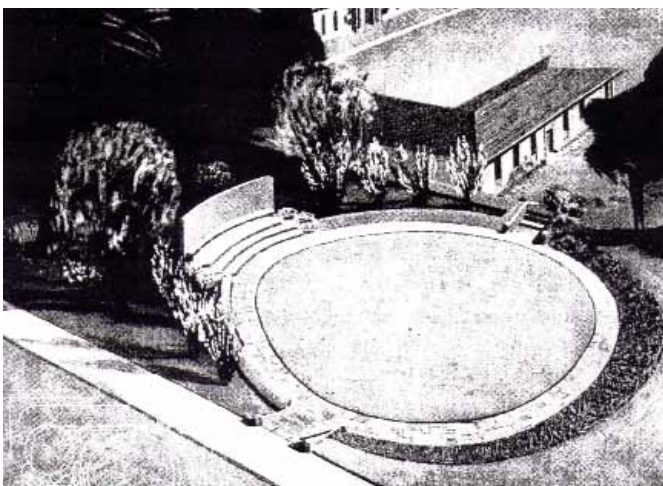
worked as an illustrator in the office of Australian-born architect and interior designer, Raymond McGrath. He then worked for English modernist E. Maxwell Fry who was later joined by Walter Gropius. In 1935, while he was assistant to Gropius. Baldwinson made a sketch of a design competition entry for Christ's College, Cambridge that bears a striking similarity to his design sketch for *Isabel Fidler Memorial Garden*: based on this, I feel it is more likely he is the designer of the memorial and garden.

In 1938 Baldwinson moved to Sydney where he opened his own architectural practice. In 1952 he was appointed senior lecturer in the Faculty of Architecture at the University of Sydney. In addition to his responsibilities as fourth year master, within two years of joining the faculty, Winston and Baldwinson were team-teaching a 24-lecture course, *'Architecture as Related to Planning'*. This course explored the *'principles of architectural planning and design; form: an expression of function; formal and informal composition; choice of materials; geographic and other influences [i.e. regionalism]; architectural grouping; principles of site planning and the preservation of buildings of historic and architectural importance.'* The recommended texts included J. M. Richards, *An Introduction to Modern Architecture* (first edition, 1940) and H. M. Robertson, *Architecture Rising* (1944).

The memorial structure is aligned along the north-south axis, at the southern end of the garden. Overall, it occupies an area of approximately 7.0m wide x 3.6m deep and at its highest point it is 1.6m tall. It is inscribed 1869 ISABEL FIDLER 1952, in *'severe...noble chiselled Roman lettering, recalling the elegance of Wilkinson's roll-call of the famous physicists on the frieze of the nearby Physics Building.'* Although the design occurred after World War II, this modest garden encapsulates the design rigour and design principles consistent with the inter-war stripped classical style: *'the clarity of form, the regular composition, the dazzling whiteness of the stone and the human scale'* are its hallmarks. The memorial comprises a semicircular sandstone seat set away from a perpendicular, stone-clad wall with a shallow, concave plan form. The exedra is placed on a podium arrived at by three broad stairs that are exaggerated along the main axis, either side of which are low garden walls. The memorial is set in a 'sunk' garden, with a central ovoid lawn traced by a stone-flagged path. The exedra echoes the Wilkinson example at the entry to the Physics Building of 1925. The unfigured, white sandstone of the path is laid in a random radial pattern, beyond which the garden expands to fill the space remaining to the perimeter of the site. To the east and north there are mounded lawns sculpted to rise up and fall to meet the footpaths of the bounding streets.

Ground works began early in 1954, with funds of £425 and a promise of a donation of the necessary plant material from Mr. and Mrs. H.D. Yates to the value of £75 . Work on the memorial was very slow: in fact the works seem to have gone into abeyance for several years. The Mens' Sports Union intended to build squash courts on the western side of the Memorial Garden. This commenced in August 1958 with an expectation of completion by January 1959. The Honorary Secretary of the Sydney University Women Graduates' Association wrote to Miss Telfer in September 1958 to advise that her committee had decided that in view of the present construction of the squash courts, it would be wiser to wait until early in 1959 to open the *Memorial Garden*: the same year that construction of the Sydney Opera House commenced.

The haunting background of two engulfing figs has vanished, many minor interventions and annoyances have encroached upon the purity of the design intent, yet this vestige serves to recall Miss Fidler's dedication to the welfare of women on campus and in the community, the fact that women were admitted to university, the significant designers engaged in the realisation of this jewel and the challenges faced by the university in conserving these small pauses that enhance the choreography of our passage.



Drawing by Baldwinson -The Gazette October 1953

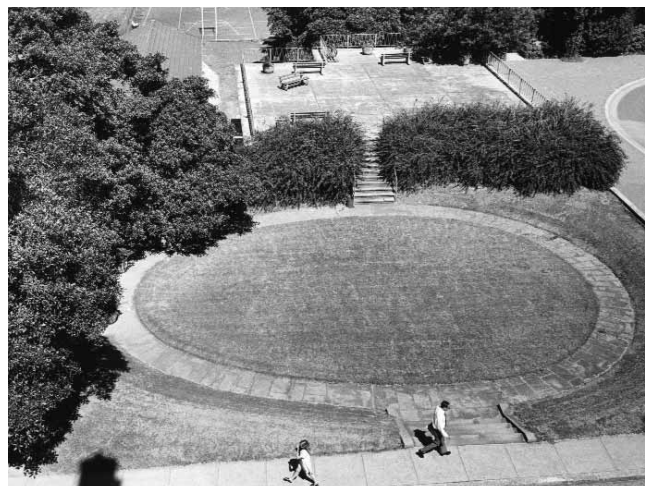


Image from the Building and Grounds Photographic Records of Isabel Fidler site 22nd January 1973

Panniers a Plantes en Osier by Prue Anthony

Our visit to La Perouse took us back in time to the very first gardens planted in 1788, by the French who arrived with the Comte De La Perouse. They were on an expedition of the Pacific, commissioned by King Louis XVI. The men stayed for six weeks and built a stockade, observatory and a garden for fresh produce on the peninsula. Pere Receveur, expedition naturalist and chaplain, had been injured previously in a skirmish with natives in Samoa and died in Botany Bay, was buried at Frenchmans Cove. He was the second European to be buried in Australia, the first being Sutherland from Cook's 1770 voyage, who is buried at Kurnell.

Apart from the commemoration of the La Perouse expedition with an ornate monument at the site, along with the grave of Father Receveur, the old cable station, now a museum, has some great displays. One that especially intrigued me was of willow baskets used to carry plant specimens home. Considering it took months to sail back to Europe, it was a wonder any plants survived at all. The later invention of the *Wardian Case* by Dr Nathaniel Ward must have been a big step in improving the success rate of transplantation of exciting new species. The poster picture, is a drawing done in 1780 by Gaspard Duchè de Vancy, (1756 -1788), an artist travelling on the Jean -Francois de La Perouse expedition. This is held at the Bibliotheque Nationale, Musee de la Marine, France. Gaspard Duchè de Vancy was a French artist and draughtsman of the 18th century. He grew up in Vienna and exhibited not only at Paris's Salon of Young Artists (1781) but also at London's Royal Academy (1784). He was particularly active in portraiture, producing images of Stanislaus of Poland (1784), the secretary of the Kingdom of Naples (1784) and Marie Antoinette and was also taken on as the official artist of the La Perouse expedition, sailing on "La Boussoleon".



Willow Baskets for transporting plants (Panniers a Plantes en Osier). The basket itself is a facsimile of the above, in the NPWS La Perouse Museum, La Perouse. (Photography by Mark Peacock, NPWS)

English Heritage's 'Landscapes at Risk' - talk by Charlotte McLean

Landscape architect, Charlotte McLean, will introduce us to English Heritage (EH)'s Register of Historic Parks and Gardens of special historic interest and explain her role working with EH from 2008-10. She will focus on EH's 'At Risk' landscapes in England's south east and explain why these are at risk.

Charlotte was landscape architect for the south east region, one of a team of seven charged with safeguarding/protecting 1600 designed historic landscapes on EH's register, a collection of nationally significant historic parks and gardens. Registered landscapes are graded in the same way as listed buildings, i.e.: grade 1, II* and II. Charlotte's area included Hampshire, the Isle of Wight, Surrey, East & West Sussex and Kent. Prior to that, she had practised as a landscape architect experienced working in historic landscapes. The EH role was more planning-focussed, giving specialist advice on developments that could affect registered landscapes. 'Landscapes at Risk' became a major part of the job, primarily working out how she could make improvements so these landscapes were no longer 'At Risk'. English Heritage's 'Buildings at Risk' programme was launched in 2008. The information is published once a year, along with the full suite of 'At Risk' heritage types including monuments, battlefields, wreck sites and conservation areas. Initially, only landscapes of medium or high risk were assessed, scored using indicators like condition, vulnerability, management and trajectory. In 2008 there were 365 registered landscapes in the south east, of which 24 were at high risk (6-7%, representative of the national picture). The data is annually reassessed.

The intention is not to publically humiliate owners. Instead the aim is to start dialogue with owners, prioritise limited time and resources to vulnerable heritage assets. EH will only offer grants to assets 'At Risk'. This scheme also raises them up the list for other grant bodies such as *English Nature & the Heritage Lottery Fund*; 'At Risk' also provides data to help identify weaknesses in the planning system, raises awareness of heritage issues and builds greater collaboration with volunteers within the heritage sector.

In the South East 'At Risk' proved to be remarkably effective and a particularly useful tool, given that registered landscapes are still relatively poorly protected. While the National Trust of Australia runs a 'Heritage at Risk' programme and some landscapes are included, there is nothing as systematic or resourced in Australia.

Charlotte will be giving an illustrated talk at the National Trust on Wednesday 9th November at about 7pm - see P. 3 for details

Packs of 8 stunning cards featuring photographs of outstanding trees by Trisha Dixon Burkitt.
2 x 4 images in each pack, blank inside. \$20 plus postage.
Available for purchase online or from
AGHS head office in Melbourne



RECORD BREAKING WIND STORMS AT *WYNSTAY* report by Rosanne Paskin & Stuart Read



Photographs by Wendy Sharp tell their own sad story

Damaging wind storms hit Mt Wilson and Mt Irvine on 5th and 6th July 2011. The wind storms produced a great deal of damage to properties and closed most roads around the villages. Here is a brief description of events and some photos provided by various sources: Jane, Florence and Wendy Smart (current owners of *Wynstay*), Stuart Read's notes from a previous AGHS tour & from the community newsletter <http://www.mtwilson.com.au/latest-news/272-wind-storm-july-2011.html> The nearest weather station, Mt Boyce over the Grose valley, recorded a maximum wind gust on Tuesday at 7.15 pm of 139 kph, the highest wind speed recorded since records began there in July 2003. From about 2 pm trees were snapping and being uprooted right across the district and power was cut. The ferocious conditions continued all night and through much of the next day. Much damage was done to property but fortunately there were only minor incidents of people being injured. At *Wynstay*, a property where AGHS previously visited and conducted a working bee, the wind brought down seven of the magnificent avenue of Monterey cypresses planted in the 1890s and pictured on the cover of Alison Halliday and Joanne Hambrett's recently published book, *A Passion for Place: Gardens of the Blue Mountains*. Wendy Smart said how fortunate she had been that the only property damage from the trees falling was a fly screen brushed off by flying debris. Elsewhere, like at so many properties, fences were down.

The *Wynstay Estate*, settled c.1875 by businessman and first mayor of Burwood, Richard Wynne, and comprising the original cottage, *Old Wynstay*, *the Stables*, *the Turkish Bath House*, *the Gate Lodge*, *Wynstay* residence and a large area of picturesque gardens, represents an early and highly intact Hill Station landscape estate. The rich plant collection from trees to shrubs, perennials, climbers and bulb layers successfully creates an idealised, romantic and sometimes fanciful recreation of an English rural estate.

The planted elements of this State-heritage listed property have had a forced reshaping. Plantings define field edges and garden 'rooms' within a large area in a most picturesque composition, no doubt deliberately intended to display Wynne's wealth and taste. The loss of such dominant landscape components, particularly a main avenue planting is both a loss but, as most gardeners will testify, an opportunity for renewal. Whether by re-creating using the same species and same spacings, or by revisiting some of the design and plant compositions within the now open, sunny and exposed sections of the property. In 2004 branch members assisted National Trust (NSW) members and friends in an extensive working bee on the property. The Sydney & Northern NSW Branch has donated \$2000, an amount equivalent to the removal of one of the huge cypress stumps but much work in clearing up debris still needs to be done. Wendy Smart who lives at *Wynstay* expressed to the branch her delight and gratitude at the funding, noting *It will go a long way towards paying for the excavator to deal with the massive stumps*.

More information on why *Wynstay* is State-heritage listed is at [www.heritage.nsw.gov.au / listings](http://www.heritage.nsw.gov.au/listings).

Join us in beautiful Berry to visit gardens, old & new, large & small

On Saturday at 11am we will be welcomed to Berry in the fabulous garden of well known horticulturist and AGHS member, Hazel King, where we will enjoy a cuppa before setting off on our tour for the day. Full instructions where to meet and the complete programme for the weekend will be forwarded on acceptance of booking. On Sunday morning we will meet at 10am in the grounds of the very grand Berry Courthouse where we will inspect the new garden which the 'Friends' have restored and recreated under the supervision of Hazel. The later start will enable those of you who wish to attend the local town markets or just enjoy a leisurely start to the day.

There are 4 other gardens to enjoy over the weekend before lunching on the Sunday in the grounds of Dept Recreation & Sport's property where we will be able to look at the internationally award winning gymnasium, enjoy the ambience of the old buildings & gardens and take a look at the new landscaping recently installed.

Numbers are limited and so early booking including payment is essential. Boxed lunches and teas for both days are included but members and their guests are to make their own arrangements for accommodation, breakfast & evening meals

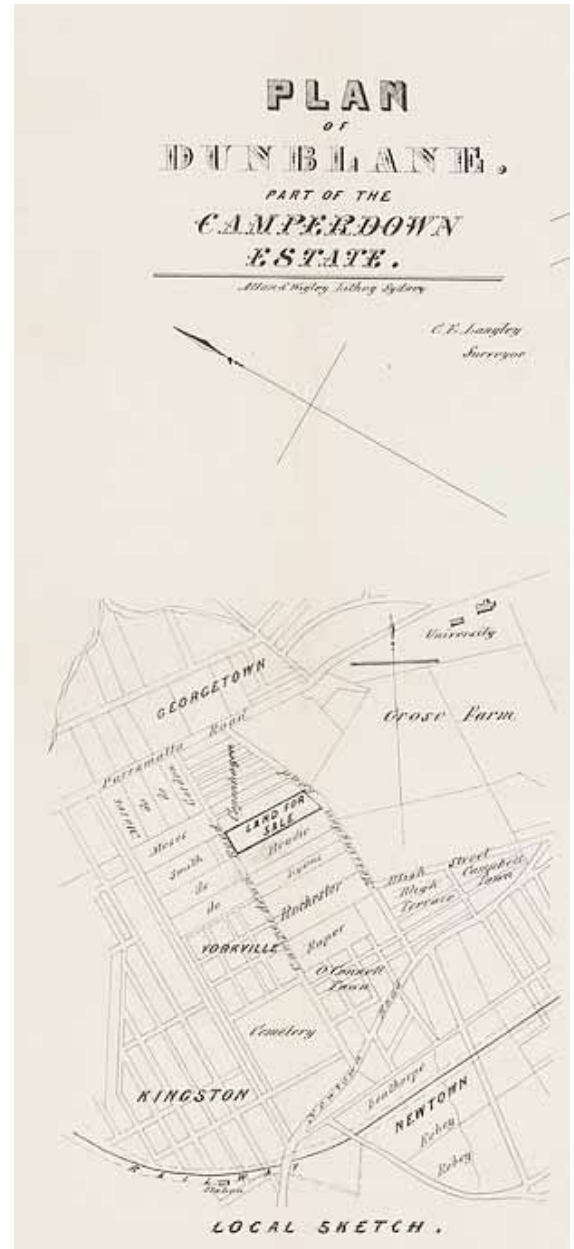
continued from Page 1

fulsome and loose.

As gardeners we wait upon the seasons and anticipate the maturity of our gardens. I waited so long to have a garden of my own, having had numerous specimens in pots about town for up to twenty five years. Nine cuttings taken from a wisteria that grew on the tennis court fence of my childhood home were struck by my brother, they languished for years and only one survives, now running atop our fence bordering the central section of the garden. Last spring it bore three buds and I watched them develop to about 50mm. One morning I went on a tour to see they'd been eaten - how could the possum have climbed such a fine limb to eat them I wondered; subsequently I saw a large rat silhouetted against a full moon - the real culprit - not as cute as a possum. I will wait for another year to see a flower I have not seen for thirty years - patience, albeit tinged with excited expectation.

I have welcomed a wide array of plants to our small walled garden - rare and wondrous, small and large. A current survey of the garden indicates the surviving plants are on the whole common, delightfully vernacular and include: *Wisteria*, hydrangeas, roses, grasses, *Justicia*, ferns, *Abutilon*, bromeliads, irises, feverfew, honeysuckle, *Erigeron*, campion, *Aquilegia*, *Brugmansia*, *Clivea*, jasmine, box, bay and begonias - these days called Nanna plants. One of the first things I did was to espalier a Meyer lemon to the posts of the rear verandah; it is only now showing signs of obeisance and plenty. Patience.

James Quoyle is Secretary of the *Australian Garden History Society* (Sydney Branch), an architect with an abiding love of gardens



Plan of Dunblane. Part of the Camperdown Estate 1855



Rosa Nahema



Hydrangeas



Honeysuckle

Newsletter edited and collated by Jeanne Villani and Stuart Read
Contributions for inclusion in the newsletter are welcomed and should be directed to:
Jeanne@Villani.com or to 90 Cabbage Tree Road, Bayview, NSW, 2104