

Using Digital Photographic Resources for old Gardens

Digital Imagery as a Tool
for Historical Research

Bill Oates
University Archivist





UNE Archivist Alan Wilkes. He learned to ride a horse by collecting records from the Macleay River Valley in the 1964. (Photo: UNE Heritage Centre, P2347)

New skill sets for a new archivist.

Gathering context before
digitisation.

Content and dating aids.

Using geographical information.

Image enhancement using
mathematical analysis to add
metadata.



Photographic Technology Photographers and their collections.

Doris White of Saumarez,
photographed with
friends at Dangars Falls .



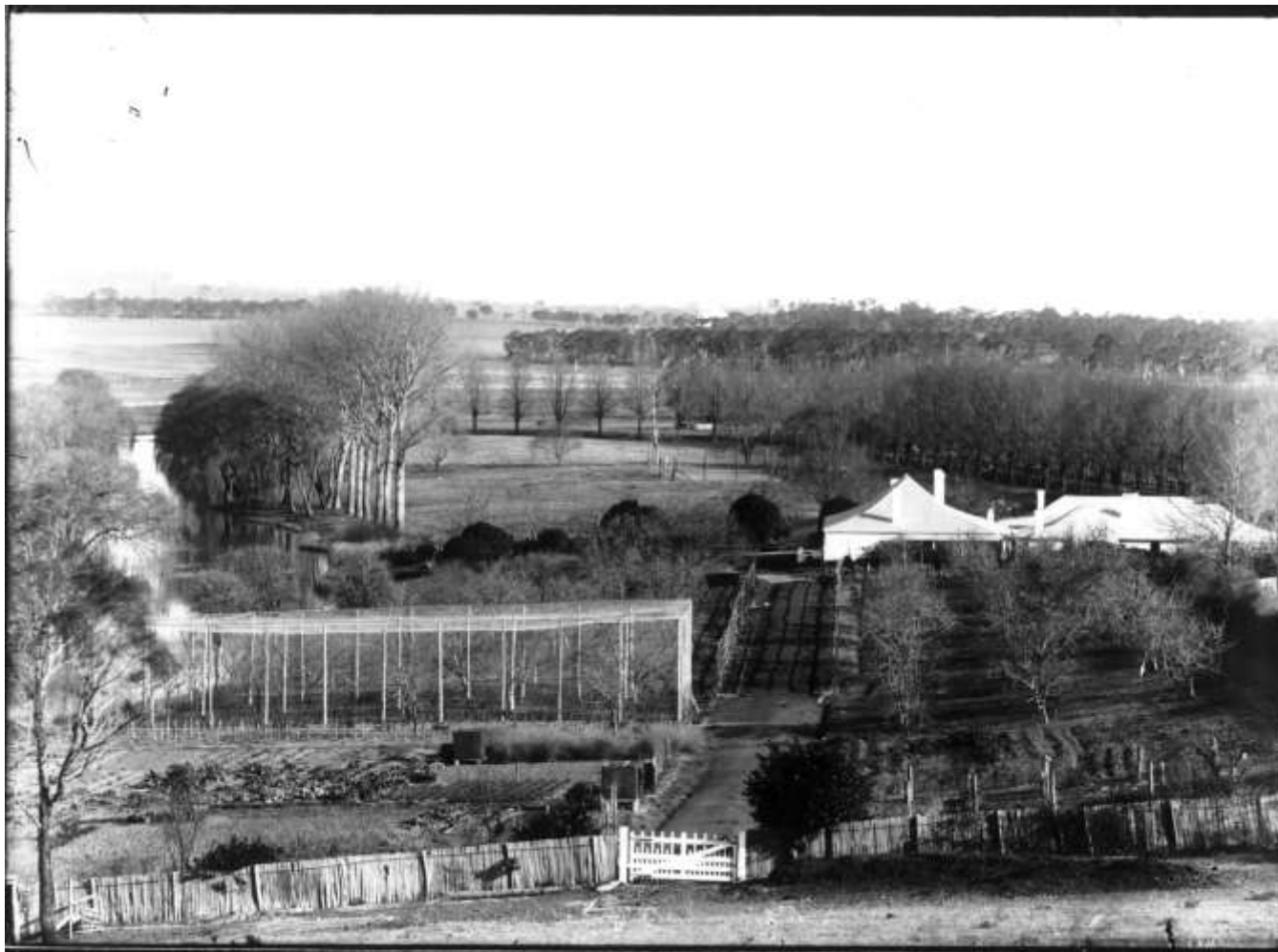


Later photos are not so easy to identify. From a family album created by Maurice Wyndham and donated into the UNE Heritage Centre by members of the family come a series of garden photos with no captions next to a page captioned 'Bukkulla'. The image depicting two children on the veranda is particularly interesting because this image was also collected as part of the Gum Flat School centenary photographic project in 1985. This index names the two as Phobe Seton and Heathcote Wyndham (Photo: UNE Heritage Centre, HRCP.)

Not 'Trevenna'!



Mis-identified in the UNE MRU photo database. Subsequently identified by retired Chancellor Dr. Rob Robertson-Cunninghame as 'Palmerston' near Armidale.



. (Photo: Heritage Centre, U.N.E. Archives, HRCP8474)



(Photo: UNE Heritage Centre HRCP1571)



AIF soldiers circa 1918 Note the Gordon Window and the Red Cross flag. (Photo: UNE Heritage Centre White Collection)



UNE grounds 1960's (Photo: UNE Heritage Centre, PS2249)



A photo found in the 'Saumarez' album showing crazy patterns in the flag stones laid as a walkway. A dominant feature is the use of stone as well as the erection of a large timber arbor. The location of this garden has been the subject of much debate. Similar stonework is evident at 'Saumarez', however the hills in the background do not match the geography of that garden. (Photo: Saumarez Collection)

Just one of the bag of techniques available to apply to the content of an image.

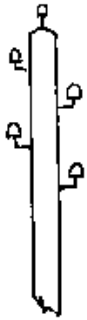


Figure 1

No crossarms
used from 1858

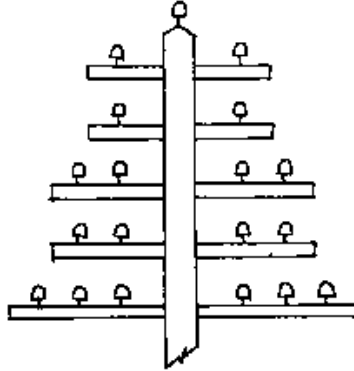


Figure 2

Tapered outline
used c.1880 to c.1900

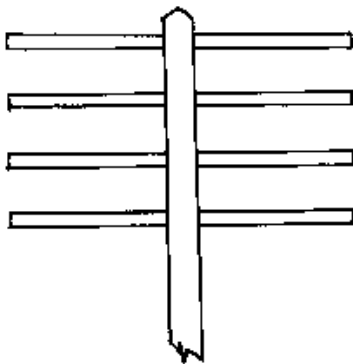


Figure 3

Square outline
used from c.1900

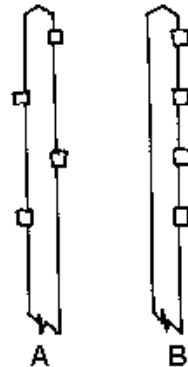


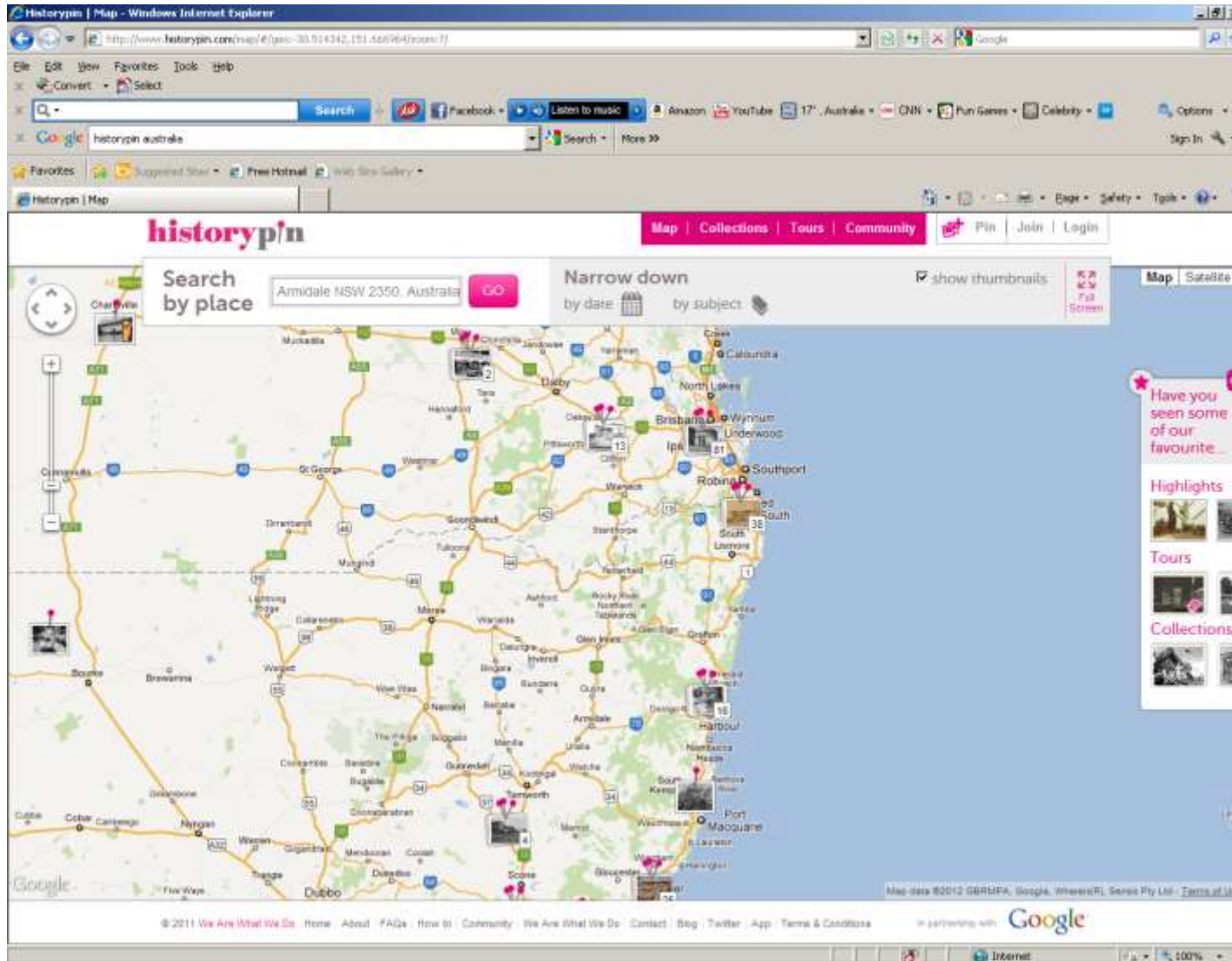
Figure 4

Side views
type A - used before c.1910
type B - used after c.1908

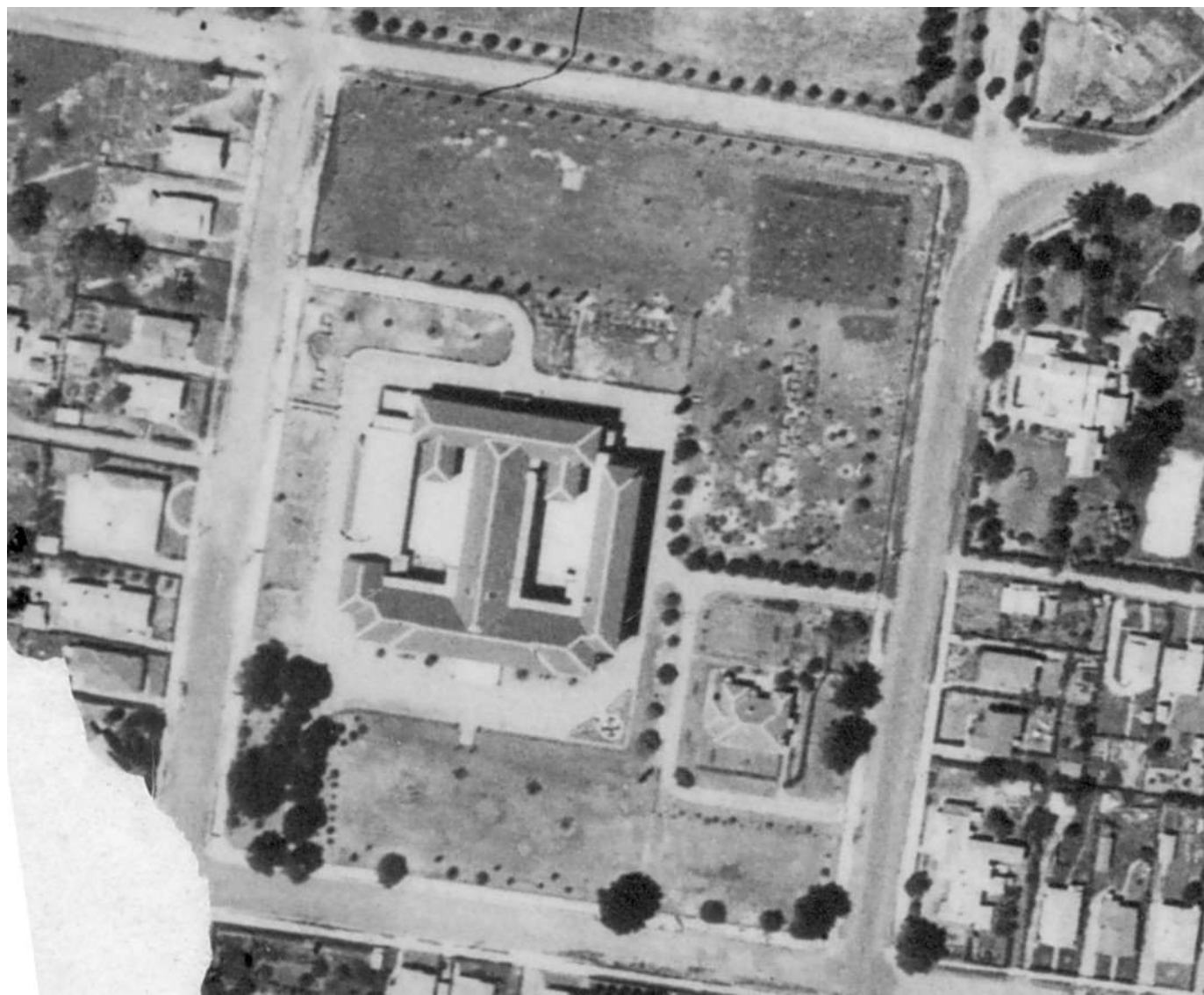


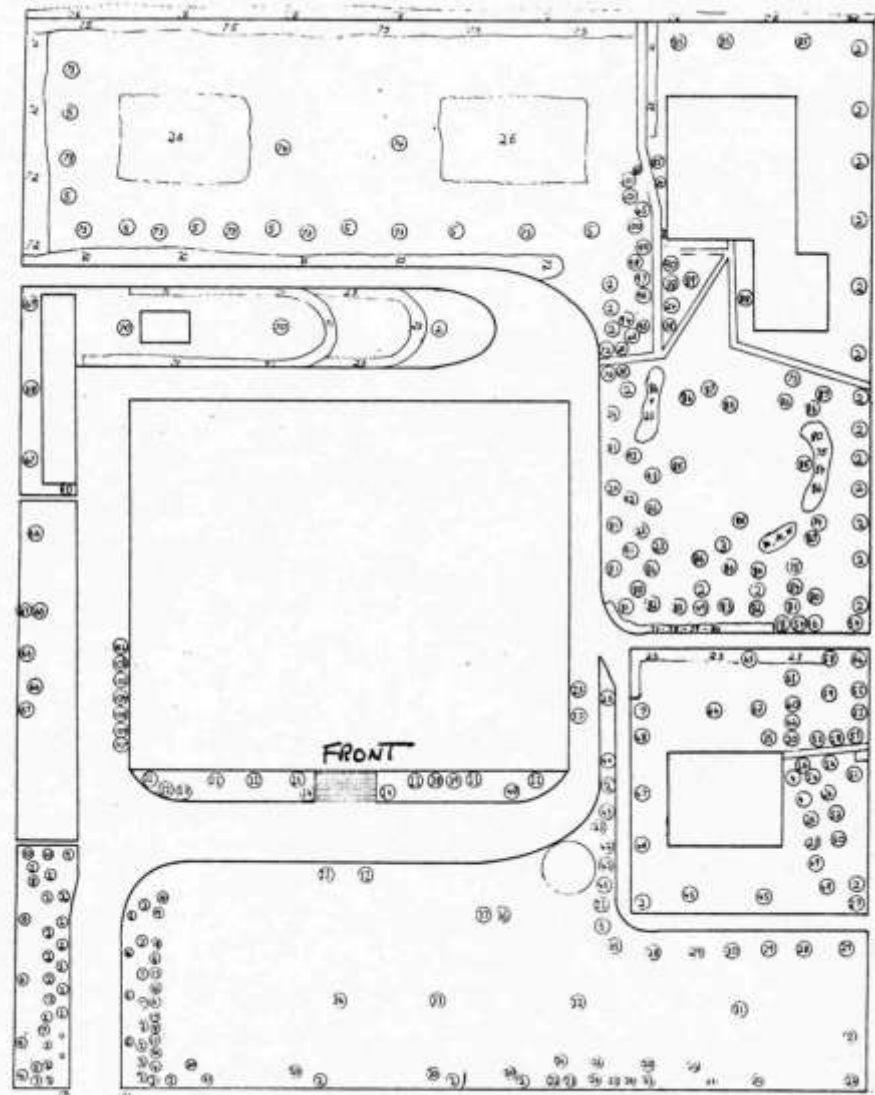
UNE Heritage Centre image HRCP4513 cropped

Geotagging and GPS









March 1962



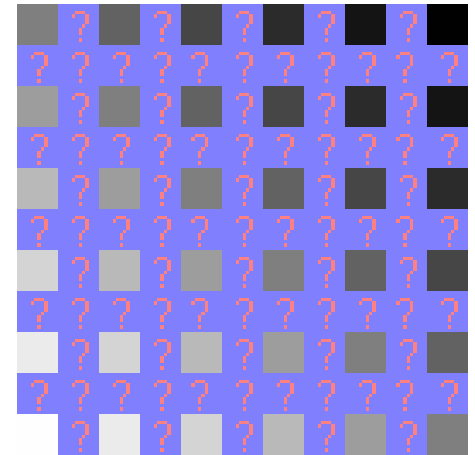
Photo – AE0547-62 permission
Armidale Express

March 2012





Digital image enhancement.



What roses used to be at 'Trevenna'?



A digitally enhanced, close up with mid-tone filters adjusted. (From a promotional photo set provided by UNE to media outlets, date unknown. MRU B1-0425)



Close up for landscape cross-reference.

