



*Rough sketch  
Bignonia Cherere from Guiana.  
The true colour of the flower is a  
shade or two deeper crimson and  
of orange. It is a magnificent  
climber and quite hardy.  
Should do splendidly on the  
large arch.*

Rough notebook sketch by Guilfoyle  
Bignonia Cherere from Guiana.  
'... It is a magnificent climber and quite hardy.  
Should do splendidly on the large arch.'  
From the La Trobe Collection, State Library of  
Victoria MS 11021.

One of the greatest essentials in landscape gardening is the variety of foliage and disposal of trees. Nothing can excel the glimpses afforded by the openings between naturally forming clumps of trees and shrubs, whose height and contrast of foliage have been studied.

William Guilfoyle  
10 August 1873

# TURKEITH AND MOOLERIC, BIRREGURRA

BY SUZANNE HUNT & ANNE COLMAN

The neighbouring properties of Mooleric and Turkeith are situated outside the Western District town of Birregurra, 45km west of Geelong in Victoria. The average maximum temperature for February is 27°C and for July is 12° C. Frosts are common from June to September and hot northerly winds challenge the gardener in summer, while the blustery south-westerly winds of winter often damage trees. The annual average rainfall is 21 inches with most rain falling in August and least in March. Soils in the area are shallow and somewhat stony, ranging from loam to clay with an average pH factor of 5.8.



First settled in the late 1830s these properties were originally part of larger holdings. Turkeith was a section of Mount Hesse station until 1861 when, under the requirements of the Nicholson Act, this large station was subdivided and Mooleric was part of the 21,717 acre Mount Gellibrand holding.

Guilfoyle's genius in the disposal of foliage and trees is apparent in the garden at Turkeith.  
Courtesy: Marika Kocsis.

## THE HOMESTEADS AND THEIR OCCUPANTS

James Ford Strachan, the first owner of Mooleric, was an early Port Phillip settler, arriving in Melbourne in 1836. His son, also John Ford, rented the property from his father and the estate remained in the family until purchased by Ferdinand Felix Armytage in 1884.<sup>1</sup> Armytage had acquired Turkeith in the subdivision of Mount Hesse and lived there with his wife Annie Fairbairn and their children until his death in 1890. In 1899 Robert and Urquhart Ramsay purchased Mooleric and four years later acquired Turkeith with their cousin Thomas McKellar. The Ramsay brothers subsequently bought out their cousin's interest, each making one of the properties his own. Robert and Mabel Ramsay settled at Mooleric and Urquhart (Nall) and Janet Russell Kininmonth (from Mt. Hesse) settled at Turkeith.<sup>2</sup>

The Turkeith and Mooleric homesteads are both substantial bluestone homes built from local stone. Turkeith – and its outbuildings, a bluestone woolshed and a bluestone hut – was built in 1865

William Robert Guilfoyle, Director of the Royal Botanic Gardens, Melbourne. Guilfoyle was appointed to the position of Curator (later becoming Director) of the Melbourne Botanic Garden from 1873 – 1912. It was during his time at the helm that the gardens were transformed from a taxonomic collection of plants to a 'pleasure garden' incorporating large sweeps of lawn, picturesque views and winding pathways lined with interesting and exotic shrubberies. His landscape principles were consistent with contemporary public taste and the gardens continue to be admired today as one of the great landscape and horticultural achievements in Australia.

## GUILFOYLE AND HIS PRIVATE GARDEN LANDSCAPE DESIGN WORK

Guilfoyle's work at the Melbourne Botanic Gardens has been well documented but little research has yet been undertaken to determine the number of private gardens he was involved with – either by helping to lay out the whole site

or perhaps providing planting advice or supplying plant material. A few private

gardens such as Mooleric and Turkeith do have archives that support his involvement but many others rely on hearsay or a 'hunch' that they reflect the trademarks of his design skill. Just how many commissions Guilfoyle undertook may never be known but there

is some anecdotal evidence to suggest that it may have been considerable. In 1882, William Elliott the horticultural editor of the *Leader* publicly castigated Guilfoyle in an article for neglecting his role as Director in favour of designing gardens for wealthy patrons in the Western District.<sup>4</sup> Elliott's accusation – if true – does raise a point about Guilfoyle's right to act independently as a landscape gardener-designer outside the contract he had as Director of the Melbourne Botanic Gardens, with the Victorian Government.

Under the Civil Service Act of 1862 and Public Service Acts of 1883 and 1890 Guilfoyle reported directly to the Secretary of Lands. His powers were arbitrary when disciplining staff and were restricted to reporting any infractions to the Secretary. A lack of absolute authority over staffing and other matters of garden management caused him a great deal of angst during his tenure. One incident involving the theft of some bulbs by a gardener in 1884 demonstrated not only



Above: Turkeith Homestead.  
Courtesy: La Trobe Collection, State Library of Victoria.

Right: Lithograph of William Guilfoyle in *The Commercial Album of Victoria*, J. Gale Pottenger & Co. c. 1880.  
Courtesy: La Trobe Collection, State Library of Victoria.

for Felix and Annie Armytage. The tennis court at the front of the house was commissioned by them and became the focus of many social events. Mooleric – and its bluestone woolshed, stables and other outbuildings – was built by the architects Davidson and Henderson in the 1870s. The tower was added in 1926, the brick wing in 1932 and the tennis court in 1940.<sup>3</sup>

At the beginning of the twentieth century the lives of the occupants of both homesteads were intertwined, not only by their familial connections but also by their relationship with

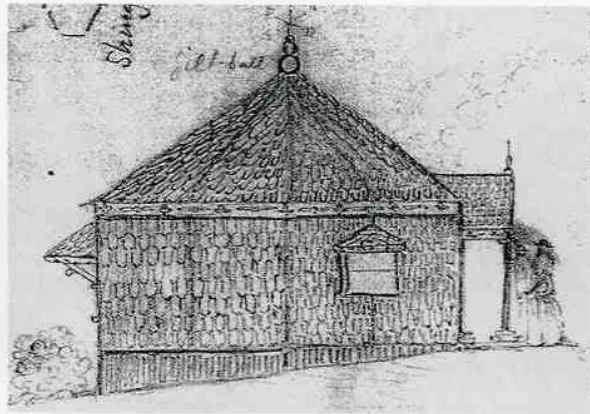


how difficult it was for Guilfoyle to maintain control but how powerful the Secretary was in making decisions regarding the removal of any plant material from the gardens. At the Board of Enquiry into the theft, the foreman Hendrick was called to give evidence. His statement revealed that it had always been Guilfoyle's policy to allow the workers to remove any unwanted plant material – within reason – for their own use.

The Board was not impressed to learn of Guilfoyle's indulgence. When their decision about the fate of the gardener was reached, a reprimand from Secretary Morrah was also directed at Guilfoyle ordering him to put a stop to the practice of, 'allowing employees in the Botanic Gardens to take away bulbs, cuttings, plants or other public property'.<sup>5</sup> Guilfoyle in his own defence denied any such knowledge.<sup>6</sup>

The Lands Department directive was very explicit. So how did Guilfoyle, himself an employee, manage to select, package up and send by rail and post, large quantities of seeds, cuttings and plant material to various clients – including his friends the Ramsays – without attracting attention from the Department? Unfortunately records relating to the propagating department at the gardens have been lost. And any evidence surrounding payments that Guilfoyle may have received for this work have also not been located. Part of the answer may be gleaned from the type of person Guilfoyle was and in particular, his philosophical view of the value of plants and gardens in fostering a civilised attitude to life.

Guilfoyle possessed very strong opinions about how the gardens should be managed and developed. His attitude towards the staff was dictatorial and he did not suffer fools gladly. And



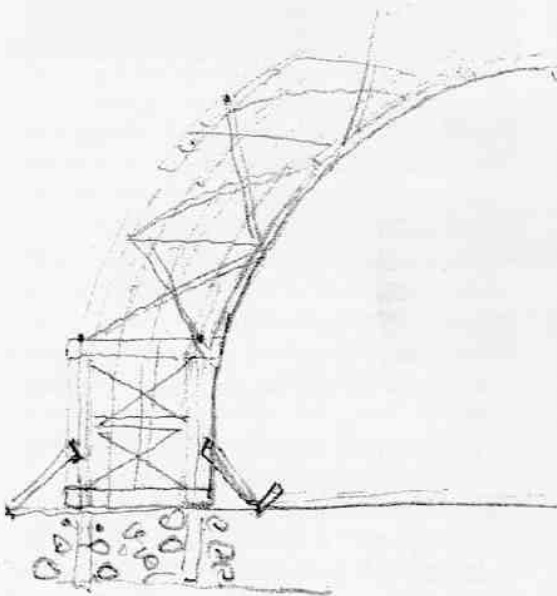
  
 Botanic Gardens, Melbourne.

12 April 1904

My dear Mrs Ramsay  
 In order that you  
 may deal with one  
 lot of plants at a  
 time, I am sending  
 by train today or  
 tomorrow the 20 kind  
 of choice climbing  
 Pelargoniums <sup>(cuttings)</sup>. By so  
 doing you will be  
 able to put them  
 about the grounds

Above: William Guilfoyle's sketch for a timber shingle bush house for the garden at Mooleric c. 1903. The structure was never built. Courtesy: The La Trobe Collection, State Library of Victoria.

Letter written by William Guilfoyle to Mrs Robert Ramsay in 1904. Courtesy: The La Trobe Collection, State Library of Victoria.



Above: Archway, Mooleric 2002. Courtesy: Suzanne Hunt.

Left: Sketch of an arch by Guilfoyle for the garden at Mooleric c. 1903. Courtesy: The La Trobe Collection, State Library of Victoria.



Park-like lawns, tropical foliage and clumps of trees of different heights at Mooleric (left) and Turkeith (right).  
 Courtesy: Suzanne Hunt.

given the number of friendships with rich landowners he fostered around country Victoria it is obvious that he enjoyed the prominent position he held in the community. In 1884 Guilfoyle became a committee member of the Kalizoic Society.<sup>7</sup> The aim of the society was to engage a cross section of Melbourne's cultural and business people in aesthetics. As a member he rubbed shoulders with the likes of James Smith, an art critic for the *Argus*, George Folingsby, Master of the Art School at The National Gallery of Victoria, and captains of industry, such as George Reid. Restoring beauty to the city and its environs from the foul smelling mess it had become was a prime motivation for the group. Guilfoyle, inspired by this notion, may have felt it was his duty to educate as many people as possible through his public and private work. He is known to have given demonstration classes at the Botanic Gardens and in a progress report in 1887 he wrote to Secretary Morrah:

*The distribution of plants of useful and economic value has been continued during the year. Numerous correspondents have been supplied with plants, seeds etc of such; for experimental culture with the object of encouraging, the growth of any likely, to prove of industrial value to the colony.*<sup>8</sup>

Motivated by the aesthetic movement espoused by the Kalizoic Brotherhood and the conviction of a strong personality, Guilfoyle may have been prepared to defy the directive of the Lands Department. How he successfully managed to thwart its directive and conduct private commissions on such a large scale remains a mystery and requires further investigation. His close friendship with the Ramsay family however was the main reason for his involvement with laying out the gardens at Turkeith and Mooleric.

#### GUILFOYLE CREATES THE GARDENS AT MOOLERIC AND TURKEITH

Watts in his seminal work, *Historic Gardens of Victoria*, includes the comment that Guilfoyle regarded Mooleric as his 'best' small private garden.<sup>9</sup> In an attempt to understand what he meant by this remark it is useful to compare some of the elements of style and horticultural endeavour found at Mooleric – and indeed at Turkeith – with the landscape design he executed at the Botanic Gardens.

On a plant collecting trip to the South Sea Islands aboard H.M.S *Challenger* in 1868 Guilfoyle became impressed with the tropical vegetation he encountered. His love of palms and other subtropical foliage was later used to great effect in all his gardens and his understanding about the importance of trees and foliage was expressed in the following terms in his monthly report soon after he took up his post in 1873:

*One of the greatest essentials in landscape gardening is the variety of foliage and disposal of trees. Nothing can excel the glimpses afforded by the openings between naturally forming clumps of trees and shrubs, whose height and contrast of foliage have been studied. At every step the visitor finds some new view – something fresh, lively and striking especially when tastefully arranged. Where long sombre rows of trees are planted, and a sameness of foliage exists the very reverse is the case. Nature's most favourable aspects then seem sacrificed to art, and that art produces a chilling effect.*<sup>10</sup>

His theory to recreate nature whilst at the same time entice the eye towards vistas and spaces is a hallmark of all three gardens. The type of bed he constructed is also a special feature. All Guilfoyle's beds are asymmetrical or arabesque in shape. This clever ploy meant that plants of differing heights and foliage could be used

throughout the bed to be viewed from all angles – each one offering a different perspective of the garden. The other key feature that defines his style is the enormous variety of plant material he used and his love of curved paths and driveways.

When discovering the joys of the private gardens at Mooleric and Turkeith it is these key elements – bed shape, placement and variety of trees and foliage that immediately bring to mind a sense of the Melbourne Botanic Gardens, albeit on a minor scale.

Letters written to Mrs Ramsay at Mooleric between 1903 and Guilfoyle's death in 1912 are held in the State Library of Victoria. Another valuable source of primary evidence, documenting his involvement with both

recommended that the seeds be watered with warm water once a week until germination occurred. In a letter dated 22 July 1903 Guilfoyle boasted that he was able to send her some Wine Palm seeds – the first ever collected from a mature tree at the gardens. In the past this tree had proven too much for the thieving larrikins who stole the ripe fruit before it could be collected!

Over the next eight years vast quantities of plant material eventually found its way from the Botanic Gardens nursery to Mooleric and Turkeith. A rockery and pond were also added at Mooleric after a design by Guilfoyle and a rustic arbour was suggested but never implemented. No doubt under the careful eye of Guilfoyle both gardens developed well. Individual touches



Guilfoyle's love of curved paths is apparent at Mooleric (left) and Turkeith (right).  
Courtesy: Suzanne Hunt.

properties are diary entries in Farm Work Books held at Turkeith. Mooleric was laid out in 1903 and Turkeith some time after.<sup>11</sup> Starting a garden at this period of time involved a great deal of patience and horticultural know-how. Mrs Ramsay, unlike gardeners today, did not have the luxury of being given potted up specimens. She received – by train or mail – plant cuttings that needed to be struck and seeds that required germination.<sup>12</sup> Luckily for her Guilfoyle provided careful instructions about where to place plant material and recipes for successful seed propagation. During 1903 Guilfoyle sent batches of Palm seeds. One lot was for the Date Palm, *Jubea*, which he recommended be 'steeped in boiling water for twenty minutes and then buried at once in 2 inches of soil'<sup>13</sup> He further

cannot be omitted however as the owners sought to impart their own imprint upon the landscape.

#### CONTINUITY AND CHANGE

Robert Ramsay of Mooleric and Urquhart Ramsay of Turkeith both died in 1948. In 1962 Mooleric was divided between Robert Ramsay's sons, Robert and Andrew while Janet Ramsay, her two daughters and a manager tended Turkeith. When Janet died in 1967, her daughter Isabella and a succession of managers ran the property until Janet Ramsay's grand daughter, Janet Gordon and her husband Lachlan purchased the property in 1986.<sup>14</sup> Mooleric remained in the Robert Ramsay family until purchased by Bill Gillies and Maryjane Crabtree in 1999.



# MOOLERIC PLANT LIST 1994

compiled by Francine Gilfedder

## BED A

*Lonicera hildebrandiana*  
*Aster* sp.  
*Prunus cerasifera* cv.  
*Bosea amherstiana*  
*Pittosporum tobira* (x 2)  
*Chimonanthus praecox*  
*Prunus lyonii*  
*Pelargonium* sp.  
*Pinus pinea*  
*Aloe* sp.  
*Echium candicans*  
*Arbutus unedo*  
*Prunus* sp.  
*Tamarix* sp.

## LAWN SPECIMENS NEAR

### BED A

*Liquidambar formosana*  
*Phoenix canariensis*  
*Butia capitata*  
*Liquidambar styraciflua*  
*Maytenus boaria*  
*Cupressus macrocarpa*  
*Cupressus glabra*  
*Plumbago auriculata*

### BED B

*Vinca minor* cv.  
*Cupressus lusitanica*  
*Fraxinus ornus*  
*Prunus cerasifera* cv.  
*Aloe lettyae*  
*Cotyledon orbiculata*  
*Hakea suaveolens*  
*Pinus radiata*  
*Pinus canariensis*  
*Pinus radiata* (stump)  
*Agapanthus praecox* subsp. *orientalis*  
*Limonium acrophyllum*  
*Heuchera sanguineum*

### BED C

*Pyracantha coccinea*  
*Crassula multicaeva*  
*Echeveria* sp.  
*Cotyledon orbiculata*  
*Chamaerops humilis*  
*Livistona australis*  
*Doryanthes palmeri*

### BED D

*Fuchsia 'Thalia'*  
*Jacaranda mimosifolia*

## BED E

*Chaenomeles speciosa*  
*Solandra maxima*  
*Phaedranthus buccinatorius*  
*Rosa* sp.

## BED F

*Deutzia scabra*  
*Condyline terminalis*  
*Agapanthus praecox* subsp. *orientalis*  
*Syzygium paniculatum*  
*Corynocarpus laevigata*  
*Prunus* sp.  
*Homalocladium platycladum*  
*Hebe* sp.  
*Strelitzia nicholii*  
*Trachycarpus fortunei*  
*Liquidambar styraciflua*  
*Tecoma stans*

## BED G

*Salvia farinacea*  
*Cupressus torulosa*  
*Phyllocladus* sp.  
*Mirabilis jalapa*  
*Melianthus major*  
*Cussonia spicata*  
*Hebe x carnea*  
*Buddleia x davidii*  
*Eucomis comosa*

## BED H

*Podochlaenium eminens*  
*Brugmansia suaveolens*  
*Syringa vulgaris*  
*Canna* sp.  
*Spiraea japonica*  
*Tamarix* sp.  
*Cordyline australis*  
*Euonymus japonica* 'Aureo-marginata'  
*Cordyline australia* 'Variegata'  
*Hebe angustifolia*  
*Chamaerops humilis*  
*Trachycarpus fortunei*  
 Various succulents (*Echeveria* sp., *Aloe* sp.)

## BED I

*Phillyrea latifolia*  
*Magnolia grandiflora*  
*Pittosporum eugenioides* 'Variegatum'  
*Brugmansia suaveolens*

*Acmena smithii*  
*Hoheria populnea* 'Variegata'  
*Bougainvillea* sp.  
*Trachycarpus fortunei*

## BED J

*Coprosma repens*  
*Prunus* sp.  
*Phoenix canariensis*

## BED K

*Canna* 'Daffodil'  
*Viburnum carlesii*  
*Cotoneaster glaucophyllus*  
*Hebe x carnea*  
*Hebe speciosa*  
*Bystropogon origanifolius*  
*Aloe lettyae*  
*Aloe plicatilis*  
*Aloe rupestris*  
*Cotyledon orbiculata*  
*Aeonium arboreum* 'Atropurpureum'  
*Pinus radiata* (stump)  
*Prunus cerasifera* 'Nigra'  
*Brachychiton acerifolium*  
*Kolreuteria paniculata*

## BED L

*Ulmus x hollandica*  
*Berberis vulgaris*  
*Pittosporum eugenioides* 'Variegatum'  
*Hedera helix* 'Hibernica'  
*Euonymus japonica* 'Aureo-marginata'  
*Rosa* sp.  
*Fraxinus angustifolia* subsp. *oxycarpa* 'Raywood'

## BED M

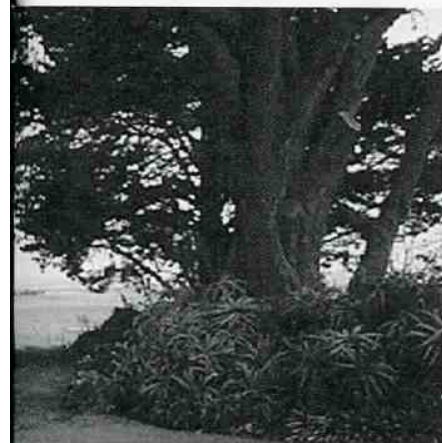
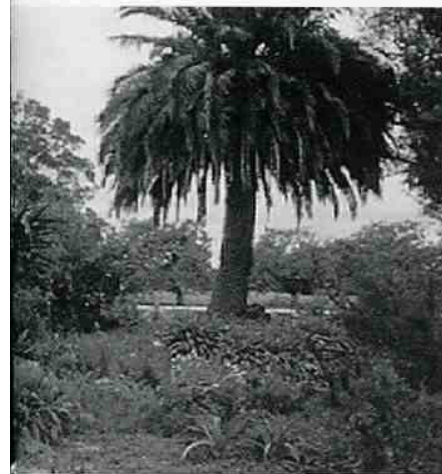
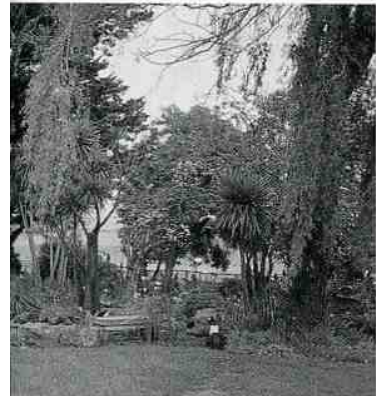
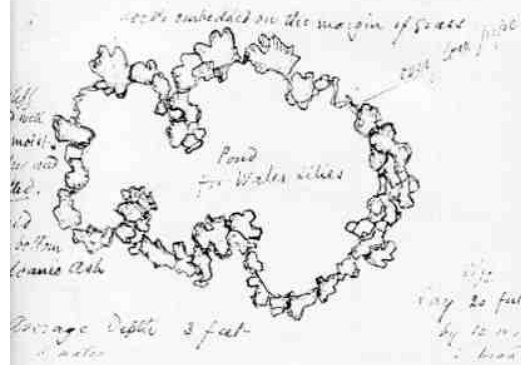
*Arundo donax* 'Variegata'

## BED N

*Cordyline australis*

## POND

*Cyperus* sp.  
*Salix babylonica*  
*Cordyline australis*  
*Dahlia* cv.



# GUILFOYLE PLANT LISTS TURKEITH

1905, 1906 AND 1907

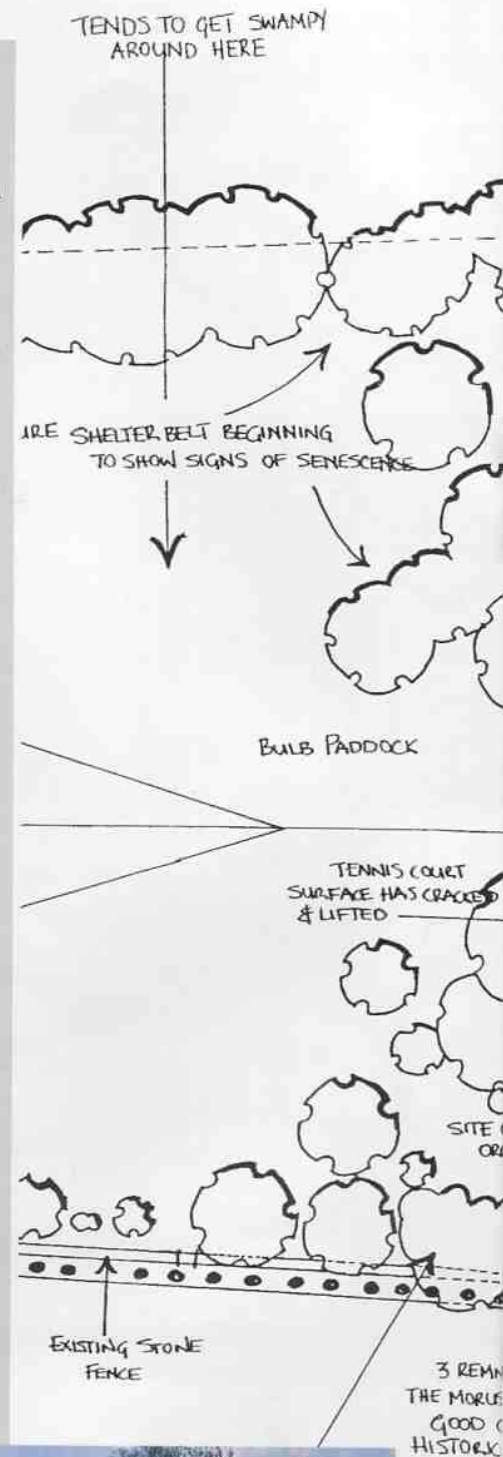
## 1905 Plant lists from by W. Guilfoyle

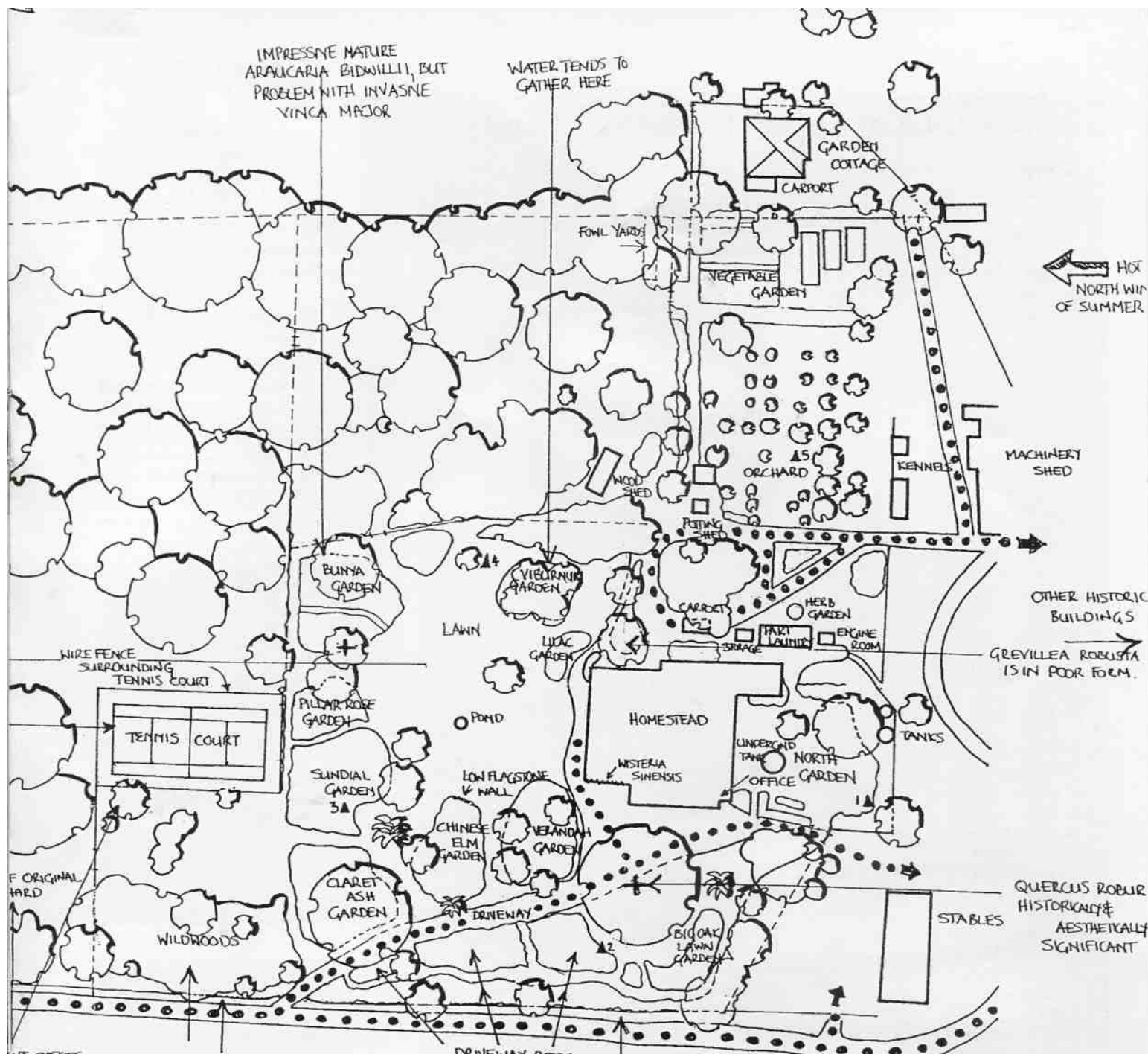
As written by Guilfoyle

As written by Guilfoyle	Current botanical name	Introduced
<i>Salvia fulgens</i>	<i>Salvia fulgens</i>	1877
<i>Salvia rutilans</i>	<i>Salvia elegans</i>	N/L
<i>Salvia bonfire</i>	<i>Salvia</i> poss. <i>splendens</i>	N/L
<i>Salvia patens</i>	<i>Salvia patens</i>	1855
<i>Salvia azurea</i>	<i>Salvia azurea</i>	1855
<i>Salvia grahamii</i>	<i>Salvia microphylla</i>	1876
<i>Salvia purpurea</i>	<i>Salvia purpurea</i>	1876
<i>Salvia stuttgart</i>	Unknown	N/L
<i>Salvia hoveyi</i>	<i>Salvia ianthina</i>	1882
<i>Salvia bethelii</i>	<i>Salvia involucreata</i> 'Bethellii'	1886
<i>Salvia Verschaffeltii</i>	<i>Salvia verschaffeltii</i>	1886
<i>Nerium Delphine</i>	<i>Nerium oleander</i> 'Delphine'	1882
<i>Nerium Mlle Dubois</i>	<i>Nerium</i> 'Madame Dubois'	1889
<i>Nerium splendens</i>	<i>Nerium oleander</i> 'Splendens'	1882
<i>Coprosma Baueri Variegata</i>	<i>Coprosma repens</i> 'Variegata'	1873
<i>Metersideros speciosa</i>	poss. <i>Metersideros excelsa</i>	1855
<i>Abutilon Golden Fleece</i>	<i>Abutilon</i> 'Golden Fleece'	1889
<i>Abutilon Niveum</i>	<i>Abutilon niveum</i> cv.	1889
<i>Abutilon Megaponticum</i>	<i>Abutilon megapotamicum</i>	1873
<i>Abutilon Vitifolium</i>	<i>Corynabutilon vitifolium</i>	1865
<i>Abutilon Hartmanii</i>	Unknown	N/L
<i>Abutilon Variegatum</i>	<i>A. megapotamicum</i> 'Variegatum'	1873
	or form of <i>A. pictum</i>	1876
<i>Abutilon Swaitzii</i> (variegated)	<i>Abutilon hybridum</i> 'Savitzi'	1855
<i>Abutilon Thompsonii</i>	<i>Abutilon pictum</i> 'Thompsonii'	1873

## 1906 Plant Lists from W. Guilfoyle

<i>Stokesia cyanea</i>	<i>Stokesia laevis</i>	N/L
<i>Strobilanthes anisophylla</i>	<i>Strobilanthes anisophyllus</i>	1855
<i>Phlomis fruticosa</i>	<i>Phlomis fruticosa</i>	N/L
<i>Gunnera scabra</i> Peru	poss. <i>Gunnera manicata</i>	N/L
<i>Magnolia purpurea</i> Japan	<i>Magnolia quinquepeta</i>	1855
<i>Calceolaria floribunda</i>	prob. <i>Calceolaria crenatiflora</i>	1860
<i>Lychnis viscaria</i>	<i>Lychnis viscaria</i>	1873
<i>Swainsonia galegifolia</i> (2)	<i>Swainsonia galegifolia</i>	1860
<i>Aster Bowiei</i> and <i>rotundifolia</i>	Unknown - poss. <i>A. capensis rotundifolius</i>	N/L
<i>Brouallia speciosa</i>	<i>Brouallia speciosa</i>	N/L
<i>Tanselinaria californica</i>	<i>Zauschneria californica</i>	1860
<i>Corylus purpurea avellana</i>	<i>Corylus avellana</i> 'Fusco-rubra'	1865
<i>Russelia juncea</i> Mexico	<i>Russelia equisetiformis</i>	1855
<i>Abutilon megaponticum</i>	<i>Abutilon megapotamicum</i>	1873
<i>Cytisus canariensis</i>	<i>Cytisus canariensis</i>	1857
<i>Papaver spicatum</i>	<i>Papaver spicatum</i>	N/L
<i>Mimulus glutinosus</i>	<i>Mimulus aurantiacus</i>	1855
<i>Bougainvillea Trallei</i>	Unknown - poss. a cultivar	N/L
<i>Bougainvillea Sanderiana</i>	<i>Bougainvillea glabra</i> 'Sanderana'	1889
<i>Fuchsia triphylla</i>	<i>Fuchsia triphylla</i>	N/L
<i>Corokia buddleoides</i>	<i>Corokia buddleioides</i>	N/L
<i>Tecoma smithii</i>	<i>Tecoma alata</i>	1889
<i>Tecoma mackena</i>	<i>Podranea ricasoliana</i>	1886
<i>Cordyline australis</i> (seedlings)	<i>Cordyline australis</i>	1855
<i>Nerium Delphine</i> (2)	<i>Nerium oleander</i> 'Delphine'	1882
<i>Calliandra Tweedii</i>	<i>Calliandra tweedii</i>	1860
<i>Cuphea ignea</i>	<i>Cuphea ignea</i>	1855
<i>Saxifraga sarmentosa</i>	<i>Saxifraga stolonifera</i>	1864
<i>Saxifraga rotundifolia</i>	<i>Saxifraga rotundifolia</i>	1855
<i>Hydrangea argentea</i>	poss. <i>H. argentea variegata</i>	1873
<i>Penstemon spectabilis</i>	<i>Penstemon spectabilis</i>	N/L
<i>Penstemon barbatus</i>	<i>Penstemon barbatus</i>	1855
<i>Lupinus polyphyllus</i>	<i>Lupinus polyphyllus</i>	N/L
<i>Verbena 'Kestrel'</i> Incomparable	poss. <i>Verbena</i> 'Kestrel'	1855
<i>Eucalyptus calophylla rosea</i>	<i>Eucalyptus calophylla</i> var. <i>rosea</i>	
<i>Statice macrophylla</i>	<i>Limonium macrophyllum</i>	
<i>Iberis semperflorens</i>	<i>Iberis semperflorens</i>	
<i>Heuchera sanguinea</i>	<i>Heuchera sanguinea</i>	N/L
<i>Chrysanthemum tripterum</i>	Unknown	





IMPRESSIVE MATURE  
ARAUCARIA BIDWILLII, BUT  
PROBLEM WITH INVASIVE  
VINCA MAJOR

WATER TENDS TO  
GATHER HERE

← HOT  
NORTH WIND  
OF SUMMER

OTHER HISTORIC  
BUILDINGS  
GREVILLEA ROBUSTA  
IS IN POOR FORM.

QUERCUS ROBUR  
HISTORICALLY &  
AESTHETICALLY  
SIGNIFICANT

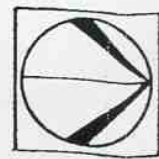
NT SPECIES.  
SP IS STILL IN  
CONDITION.  
LTY SIGNIFICANT

STONE FENCE  
IN NEED OF REPAIR

DRIVEWAY BEDS  
THE MAJORITY OF VEGETATION IS  
OVERGROWN BY SUCKERS & AGGRESSIVE  
SPECIES.

VEGETATION HAS BEGUN  
TO PUSH ORIGINAL WIRE FENCE  
OVER.

KEY	
▲	SOIL SAMPLE
●	CIRCULATION
↗	SIGNIFICANT VIEWS
+	FOCAL POINT



DRAWN: MARIKA KOCSIS  
DATE: JUNE, 1997  
SCALE: 1:5000  
0 10 20

SITE ANALYSIS  
TURKEITH

Left: Giant Cactus at Turkeith.  
Courtesy Suzanne Hunt.

Far left: Palms were a favourite subject in Guilfoyle's garden  
designs. They flourished at Mooleric.  
Courtesy Suzanne Hunt.

<i>Cannas</i> 'Iberia', 'Mrs K. Gray', 'Robert C(ro)en', 'Koningen Charlotte', 'Alice Guilfoyle' 'Evolution Mont Blanc'	Unknown cultivars	N/L
<i>Rosa Brunoni</i> (cuttings)	<i>Rosa brunonii</i>	
<i>Strelitzia angusta</i>	<i>Strelitzia alba</i>	1857
<i>Strelitzia juncea</i>	<i>Strelitzia reginae</i> var. <i>juncea</i>	1857
<i>Strelitzia regina</i>	<i>Strelitzia reginae</i>	1857
<i>Acanthus</i>	poss. <i>Acanthus mollis</i>	
<i>Populus monilifera aurea</i>	<i>Populus x canadensis</i> 'Serotina Aurea'	1864
<i>Erythina indica</i>	<i>Erythina indica</i> or <i>E. sykesii</i>	N/L
<i>Solanum azureum</i>	poss. <i>Solanum arboreum</i>	1860

#### 1906 (October) Abutilon Lists from W. Guilfoyle

<i>Abutilon Niveum</i>	<i>Abutilon niveum</i>	1889
<i>Abutilon Venosum</i>	<i>Abutilon venosum</i>	1885
<i>Abutilon Molle</i>	poss. <i>Abutilon mollissimum</i>	N/L
<i>Abutilon Armand Canway</i>	Unknown	N/L
<i>Abutilon Aurelia</i>	<i>Abutilon</i> 'Aurelia'	1882
<i>Abutilon Bonle de neige</i>	<i>Abutilon</i> 'Boule de Neige'	1876
<i>Abutilon Cerise unique</i>	poss. <i>Abutilon carmineum</i>	1876
<i>Abutilon Eclipse</i>	Unknown	N/L
<i>Abutilon Hero of Magdala</i>	Unknown	N/L
<i>Abutilon Hibiscus</i>	Unknown	N/L
<i>Abutilon Lilaceum album</i>	<i>Abutilon</i> 'Lilacea Alba'	1882
<i>Abutilon Lady of the Lake</i>	<i>Abutilon</i> 'Lady of the Lake'	1882
<i>Abutilon Louis Delaux</i>	poss. <i>Abutilon</i> 'Louis Delaux'	1882
<i>Abutilon Souv. de Bonne</i>	Unknown cultivar	1882
<i>Abutilon Boule di Or</i>	<i>Abutilon</i> 'Buisson d'Or' Unknown	N/L
<i>Abutilon Striatum</i>	<i>Abutilon pictum</i>	1855

#### 1907 (28 March) Plant Lists from W. Guilfoyle

<i>Fuchsia triphylla</i>	<i>Fuchsia triphylla</i>	N/L
<i>Escallonia montevidensis</i>	<i>Escallonia bifida</i>	
<i>Escallonia macrantha</i>	<i>Escallonia rubra</i> var. <i>macrantha</i>	
<i>Lasiandra macrantha</i>	<i>Tibouchina semidecandra</i>	N/L
<i>Lasiandra sarmentosa</i>	<i>Tibouchina</i> sp.	
<i>Bougainvillea Trillei</i> (2)	Unknown – poss. a cultivar	N/L
<i>Browallia jamesonii</i>	<i>Streptosolen jamesonii</i>	
<i>Diervillea candida</i>	<i>Weigela florida</i> 'Candida'	N/L
<i>Magnolia obovata purpurea</i>	poss. <i>Magnolia hypoleuca</i>	N/L
<i>Ceanothus azureus</i>	<i>Ceanothus coeruleus</i>	
<i>Michelia champaca</i>	<i>Michelia champaca</i>	N/L
<i>Rhus succedanea</i>	<i>Rhus succedanea</i>	
<i>Virgilia capensis</i>	<i>Virgilia capensis</i>	1857
<i>Ligustrum ovalifolium Varieg</i>	<i>Ligustrum ovalifolium</i> 'Variegatum'	
<i>Erythina Hancoonii</i>	Unknown	N/L
<i>Erythina Crista Galli</i>	<i>Erythina crista-galli</i>	1855
<i>Tecoma Smithii</i> (2)	<i>Tecoma alata</i>	
<i>Phaseolus caracalla</i>	<i>Phaseolus caracalla</i>	
<i>Escallonia organensis</i>	<i>Escallonia laevis</i>	1857
<i>Clethra arborea</i>	<i>Clethra arborea</i>	1886
<i>Duranta stenostachyia</i>	<i>Duranta stenostachyia</i>	N/L
<i>Grevillea alpina</i>	<i>Grevillea alpina</i>	1860
<i>Grevillea lavandulacea</i>	<i>Grevillea lavandulacea</i>	N/L
<i>Banksia</i> var. <i>Forsteri</i>	<i>Grevillea banksii</i> var. <i>forsteri</i>	N/L
<i>Strelitzia juncea</i>	<i>Strelitzia reginae</i> var. <i>juncea</i>	1857
<i>Bursaria pantonii</i> (3)	Unknown	N/L
<i>Chorozema cordata</i>	<i>Chorozema cordatum</i>	1860
<i>Mandevillea suaveolens</i>	<i>Mandevillea laxa</i>	1857
<i>Nerium Delphine Pink</i>	<i>Nerium oleander</i> 'Delphine'	
<i>Nerium Splendens</i>	<i>Nerium oleander</i> 'Splendens'	1855
<i>Nerium Mme Peyre</i>	<i>Nerium oleander</i> 'Madame Peyre'	
<i>Nerium Coareum</i>	Unknown	
<i>Nerium Grandiflorum Album</i>	<i>Nerium oleander</i> 'Album' Grandiflorum	

#### Lists from Marika Kocsis

Isabella (Kate) Ramsay, her pet brogla and her mother, Janet sitting in front of the Sundial Bed c. late 1930s. Courtesy: Janet Gordon.



The garden at Mooleric 2002. Courtesy Suzanne Hunt.

Guilfoyle's influence on the state of the two gardens was pervasive. In his annual report of the Melbourne Botanic Gardens in 1876, Guilfoyle wrote that:

*One of the principle features in my original design was the creation throughout the gardens of spacious lawns... thus giving to suitable places a Park-like appearance.*<sup>15</sup>

It was a feature which he used constantly in his private gardens – evident at Turkeith and Mooleric – and which was maintained by the occupants of both properties. Guilfoyle played with perspective. The lawns and garden beds can be metaphorically described as resembling a sea surrounded by islands – a park-like lawn surrounded by islands of trees graded in height and under-planted with feature plants of mixed foliage. Indigenous plants from local properties were planted along with camellias from nurserymen in New South Wales and exotic overseas trees like the golden spindle tree from Japan.<sup>16</sup> Both gardens have vistas – within various sections and through the landscape to the distance.

Today at Mooleric the five acre garden remains faithful to its original design, apart from the removal of some large trees on the western and southern boundaries. The original cypress-lined sweeping drive is still extant, as are the rock-edged islands of gardens, and various plants ordered by Guilfoyle, such as *Plumbago auriculata*, still exist. The loss of windbreaks, and large cypress and pine trees in the 1944 bushfire are the biggest changes to the garden. When the tower was added to the house in 1926 a gravel driveway

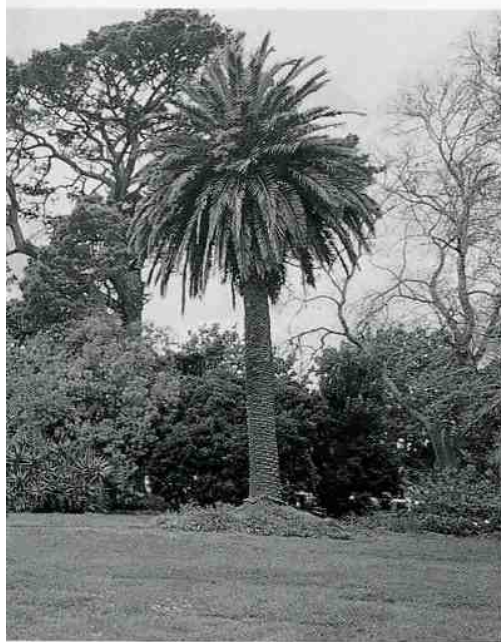
next to it was also added, while in 1940 a tennis court was built to the south-west of the house and in 1976 a swimming pool. The garden, nevertheless, retains Guilfoyle's key elements of winding driveways and paths, shrubberies, mixed colourful foliage, drought-tolerant plants, arbours and the pond.

Similarly, Turkeith reflects Guilfoyle's original purpose to create a showpiece. The sweeping driveway, highlighted by a freestone wall remains, as do the curving garden beds around the large lawn and the winding pathways as at Mooleric. Changes that came to the garden after the death of Janet Ramsay – most notably the planting of many trees in the lawn and the gradual decline of the garden – have been arrested by much hard labour. And so the garden again demonstrates the spatial, colourful landscape designed by Guilfoyle. The islands of shrubberies, the vibrant garden beds and glorious trees such as the *Quercus robur* (English oak) by the front gate flourish as Guilfoyle had intended. The orchard and kitchen garden to the west of the homestead are extant and well used.

#### PRESERVING GUILFOYLE'S VISION

The farm books and letters recording the daily activities at Turkeith and Mooleric demonstrate how faithfully the Ramsays carried out Guilfoyle's recommendations. Janet Ramsay, on 9 August 1909, introduced a new gardener to work in the gardens at Turkeith, while she herself spent the day pruning in the orchard.<sup>17</sup> When Guilfoyle paid a visit on 14 March 1910 and advised 'more trees on the E side – must shut out stable. Pegged out pergola and opening through bed under oak tree – path around Tamarisk', subsequent entries note the progress of the work.<sup>18</sup> Janet Ramsay and a succession of gardeners laboured for 40 years to maintain the islands of garden beds with their colourful mix of annuals, perennials and exotics, so that by the 1950s Guilfoyle's vision was evident. Janet Gordon, Ramsay's grand daughter, and her husband Lachlan are infused with the same determination to maintain Guilfoyle's vision. Similarly, the Mooleric Ramsays maintained their garden and, by the end of their ownership, it was noted for its state and national significance. Maryjane Crabtree and Bill Gillies, the current owners, are also enthused to preserve their unique landscape.

Conservation and management plans have been written for both properties, and significant help has been extended by organisations such as the Australian Trust for Conservation Volunteers and the Australian Garden History Society.<sup>19</sup> The latter conducts regular working bees at both properties, the labour provided by garden lovers who are determined to aid in the preservation of such significant landscapes.





Top: Aloes at Turkeith 2002.  
Courtesy: Suzanne Hunt.

Above: Dry stone wall at the entrance to Turkeith.  
Courtesy: Suzanne Hunt.



## SOURCES

- Bonyhady, Tim, *The Colonial Earth*, The Miegunyah Press 2002
- Fox, Paul. Discussion, Wednesday, 16 October 2002
- Gardens and Parks Report of the Inspector-General of Gardens, Parks and Reserves*, Department of Lands and Agriculture, John Ferris, Government Printer, Melbourne, 1873
- Gilfedder, Francine, *Mooleric, Birregurra. Garden Conservation Plan, Heritage Branch Department and Planning*, Richmond, 1994
- Guilfoyle, W.R., *Annual Report of the Melbourne Botanic Gardens, Government House Grounds and Domain*, John Ferris, Melbourne 1876
- Kocsis, Marika, *Turkeith, Birregurra. Landscape Conservation Analysis and Management Plan*, Victorian College of Agriculture and Horticulture, Burnley, 1997

Pescott, R.T.M., W.R. Guilfoyle 1840-1910. *The Master of Landscaping*, Oxford University Press, 1974

Ramsay Collection, State Library of Victoria  
Turkeith Farm Books, 1904, 1905, 1906, 1907, 1908, 1909, 1910

Watts, Peter, *Historic Gardens of Victoria: A reconnaissance*, OUP Melbourne 1983.

## ACKNOWLEDGMENTS

Particular thanks to Janet and Lachlan Gordon, Maryjane Crabtree and Bill Gillies, Paul Fox, Marika Kocsis and Francine Gilfedder, John Hawker, and Jock Murphy and Mary Lewis at the State Library for the use of their records, knowledge, practical assistance, and above all for their enthusiasm for this paper.

## FOOTNOTES

- 1 Douglas Pike (ed.), *Australian Dictionary of Biography*, vol. 2, 1788-1850, Melbourne University Press, Carlton, 1989, p. 492
- 2 Francine Gilfedder & Associates, *Mooleric, Birregurra Garden Conservation Plan* 1994, pp.29-30, 17 : Marika Kocsis, *Turkeith, Birregurra Landscape Conservation Analysis and Management Plan*, pp. 37-39, 35
- 3 The homestead and woolshed are classified by the National Trust, National Trust of Australia (Victoria) Website. Turkeith is listed, but not classified.
- 4 *Leader*, 15 April 1882, 'The Botanic Garden', p.9.
- 5 Darren Watson, 'William Guilfoyle and Staff Discipline in the Botanic Gardens' in '*Melbourne's Pride and Glory: 150 Years at the Royal Botanic Gardens*', *Victorian Historical Journal*, Vol. 67, No. 1, p. 131
- 6 *Ibid*, p.32
- 7 Tim Bonyhady, *The Colonial Earth*, The Miegunyah Press 2002, Chapter 8; pp.219-247.
- 8 Report Botanic and Domain Gardens. Short General Report on the Progress of the Botanic Gardens from Guilfoyle to A. Morrah Secretary for Lands Department. Melbourne. 14/9/1887. Page 3.
- 9 Peter Watts, *Historic Gardens of Victoria : A reconnaissance*, OUP, Melbourne, 1983
- 10 Monthly Report of the Curator of the Botanical and Domain Gardens, 10 August 1873.
- 11 Entry, 7 May 1906 Farm Book 1906
- 12 Entry, 17 April 1909 Farm Book 1909
- 13 Letters, W.R. Guilfoyle to Mrs. Ramsay, 7 July 1903 : 22 July 1903
- 14 Kocsis, op. cit. pp.45-46; Gilfedder, op. cit. p.30.
- 15 W.R. Guilfoyle, Annual Report of the Melbourne Botanic Gardens, Government House Grounds and Domain, John Ferris, Melbourne 1876, p.3
- 16 Discussion with Paul Fox, 16/10/2002 : Entries, Notes from 1903, 'Plants from Mr. Guilfoyle' beginning of Farm Book 1914
- 17 Entry, 9 August 1909, Farm Book 1909
- 18 Entries, 14 March 1910: 26 27 March 1910 :25 April 1910 : 11,12, 13 14 May 1910 : 4 June 1910 Farm Book 1910
- 19 Gilfedder, op. cit: Kocsis, op. cit.