

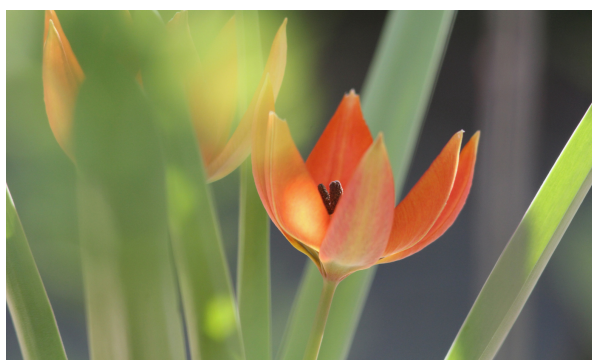


AUSTRALIAN  
GARDEN  
HISTORY  
SOCIETY

# *Victoria Branch News*

**SPRING 2021**

## **MESSAGE FROM THE CHAIR**



Tulipa whittallii - Image: Trevor Pitkin

Dear Victorian Branch Members

Welcome to our Spring newsletter. Again, we find ourselves having to cope with various stages of lockdown, so the committee hopes the promise of better weather and spring gardens is keeping your spirits up. I'm very glad I decided to plant extra pots of cheery daffodils and tulips this year, as I've enjoyed watching them emerge and brighten up my days.

It was very disappointing to have to cancel the Walk and Talk at Wattle Park on what was a perfect day, but we will reschedule this event again in the future. Similarly, our working bees could not proceed. It is also disappointing that our face-to-face National Sydney Conference was cancelled but it is fortunate that lectures are able to be offered on zoom, so we hope you've booked in for that!

We are hoping for many members and friends to join us on Sunday 26 September at a free event, generously hosted by the Lang family, with assistance from the Camperdown Botanic Gardens and Arboretum Trust, to launch the booklet about their property, Titanga. See booking details below.

This was written by our committee member, Tim Gatehouse, and is available from our website. Tours of the nearby Camperdown Botanic Gardens will also be available that day.

### **Committee News**

Our treasurer Anne Aston has resigned after several years on the committee, and we thank her for her contribution in helping the branch run smoothly.

Consequently, we have shuffled roles with Anna Long now taking over as Treasurer and also as the Victorian Branch National Management representative from me when my term expires in November.

**IT'S OUR AGM ON 30 SEPTEMBER  
LIKE TO JOIN THE COMMITTEE? GREAT  
OPPORTUNITIES AND FUN!**

We are always looking for new people and a range of skills and enthusiasm. In 2022 we are planning to set up an "Events Sub-Committee" as we have lots in store in a post-Covid world. You DON'T necessarily need the ideas, as we have lots and well-established networks, so if you'd like to learn how we go about it, meet fascinating garden owners, and follow up all sorts of leads, we'd love to have a chat to you about joining us. We are also looking for assistance with publicity and the newsletter – again training is available. Also, it is NOT necessary to come to all the committee meetings.

So please call me on 0408340967 if you are interested.

**Wendy Dwyer - Chair**

### **WELCOME NEW MEMBERS**

The committee would like to welcome the following new members who have joined since the last Newsletter:

Mary-Anne Carmody, Prue Watson, Michael Cook, Jane Hughes.



### Diary Dates:

**10-13 September** – National Conference Sydney “Many dreams/One Landscape” – lectures via zoom

**Sunday 26 September** – Self-drive visit to Titanga, Lismore for launch of booklet – free event

**Thursday 30 September** – Vic Branch Zoom AGM followed by lecture on “The Past, Present and Future of the University of Melbourne System Garden” by Tim Uebergang, former Curator of Horticulture.

**Friday 22 October** – Bus trip – Melba/Streeton Day in the Yarra Ranges to their gardens and house interiors

**Sunday 14 November** – National AGM and lecture.

**Wednesday 1 December** – Christmas Walk and talk at The System Garden University of Melbourne as lecture follow-up.

**RESCHEDULED to Saturday 12 February 2022** – Afternoon Symposium of lectures, book launch and garden tours Burnley College with FOBG.

## UPCOMING EVENTS

### TITANGA: BOOK LAUNCH

**Sunday, 26 September 2021**  
**10am for the launch at 11am**

The Lang Family and the Camperdown Botanical Gardens and Arboretum Trust invite you to celebrate the launch of the booklet **Titanga: A homestead in the landscape** by Tim Gatehouse. This is one of the projects made possible by the 2019 grants to celebrate the 40th Anniversary of the Australian Garden History Society.

This event will be launched by the renowned architectural historian Dr Timothy Hubbard.



Photo credit: Anna Wolf

#### Location:

Titanga is three kilometres west of Lismore on the Hamilton Highway. Enter through the gates by the white lodge on the north side of the highway after passing the Lismore-Skipton Road intersection.

Light refreshments (tea/coffee/Milo and scones) will be provided at Titanga, or you may bring your own picnic. Toilets are available and dogs on leads are welcome. You will be able to explore the Titanga garden until 1.30pm.

If you wish, continue on to the Camperdown Botanic Gardens and Arboretum 220 Park Road, Camperdown, where there will be a guided tour at 2pm.

Registration is required to comply with COVID safety procedures and is limited to 30 AGHS members & their guests.

Please book through Trybooking – [www.trybooking.com/BTQVR](http://www.trybooking.com/BTQVR)

## AGM & Lecture

### The past, present and future of University of Melbourne's System Garden

By Tim Uebergang

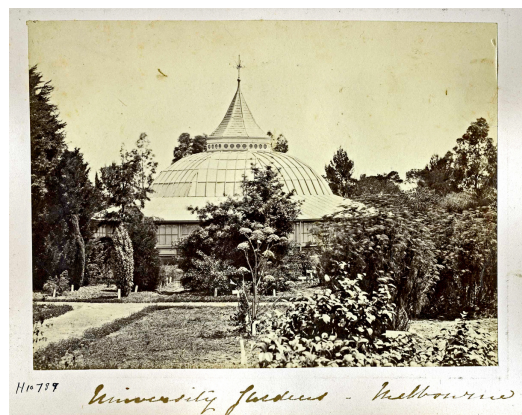
**Date:** Wednesday September 30

**Time:** 6:30 pm

**Venue:** Online via ZOOM

**Price:** \$10 members and Friends RBG, \$15 non-members

[www.trybooking.com/BTOZL](http://www.trybooking.com/BTOZL)



System Gardens Historic Glasshouse Circa 1890s

**Booking note:** a Zoom link will be sent to you separately after bookings close.

**Tim Uebergang** will share with us his perspective on the history and future of the University of Melbourne's 168-year-old System Garden. This botanic garden is one of the country's oldest still functioning teaching gardens. We'll hear about how the Garden began, under instruction of the first professor of Natural Sciences, Frederick McCoy, and its design, by one of the most talented and prolific Anglo-Australian landscape gardeners of the nineteenth century Edward LaTrobe Bateman. The Garden was almost lost at the turn of the century and its identity subsumed under council management during the middle part of the 20th century. Today it is a much-loved space by students, staff and the public.

We'll hear how academics have used the collections for their research and how Tim has balanced the need for both teaching and pleasure. It is the 2018 System Garden Masterplan that has put the System Garden on its most positive trajectory in 100 years. Tim will show how that masterplan has the potential to protect the System Garden in an uncertain University environment.



**Tim Uebergang** is a plant collector who began his career in the visual arts. He studied horticulture and botany at the University of Melbourne and has been the Curator of Horticulture at the System Garden from 2007 and 2021 (he has in the last few months accepted a new position at Royal Botanic Gardens Victoria). Established in 1856 the System Garden is one of the country's oldest teaching and learning gardens. By restoring the garden back to a refuge of plant learning Tim has seen the garden become a multi-disciplinary resource where students of all ages can learn about the wonder of plants. Tim has a particular interest in Cycads which peaked during a scholarship to Kew Gardens and Cambridge Botanic Gardens in 2011. Tim has spoken about the positive work happening in the System Garden in conferences in Colombia, New Zealand and Australia.



## Working bees

Please note: Due to COVID restrictions, we were unable to go-ahead with the working bees at these properties on the previously advertised dates. The new dates are below. If you wish to wish to make the most of the opportunity to get outdoors with some like-minded gardeners, please contact Di Ellerton.

**diana.ellerton@icloud.com OR telephone 9397 2756**



### **Turkeith,**

**Date: Saturday September 18**

**Time: 10am start**

Located outside the Western District town of Birregurra, and 45 km west of Geelong, this property is notable as an example of Guilfoyle's work with its park-like lawns and island beds.



### **Belmont,**

**Date: Saturday October 2**

**Time: 10am start**

Belmont Estate was the first working bee site adopted by AGHS, and is registered on the Heritage Council of Victoria's Victorian Heritage Register. There is a wonderful pictorial on AGHS website too.

## ADVOCACY NEWS

### **Wombat Park**

In September 2019, the Branch submitted a comprehensively documented nomination to Heritage Victoria for Wombat Park to be included on the Victorian Heritage Register. This iconic property near Daylesford with its unusual tapestry hedge, large collection of significant trees and beautiful Arts and Crafts style house set in the homestead garden, is well known to members as working bees were often held there with the late owner, Isabel Mackenzie.

It emerges that the sale of the property by tender, begun in late 2020, was abandoned early in 2021. Agents for the property have advised that a public auction is now planned for November this year. The site assessment that was planned for May 2021 did not occur, and since that time the opportunities to do this assessment have rapidly disappeared with the tightening pandemic restrictions.

While the impression in conversation given by Heritage Victoria is generally positive regarding the chances of formal registration of Wombat Park, the fact is there are several steps to go, assessment notwithstanding. The first will be a 60-day period to allow public objections, possibly as soon as September, followed by formal decision at board level. It is unlikely a decision will be available before the scheduled auction, nevertheless bidders will be aware of the registration process through the formal advice from Heritage Victoria when they received the original submission.

### Royal Park Conservation Management Plan

In June 2021 the City of Melbourne released an early draft of the Background History section of the Royal Park Conservation Management Plan. This draft was thoroughly reviewed by AGHS, and detailed comments were submitted to the Parks and City Greening division.

It was noted that the authentic Aboriginal narrative is lacking in the draft. The accounts given in the history are all either based on colonial commentary, or generalizations attached to landform usage by traditional custodians. With the draft document there is reference to parallel work: "Please note that consultation with Traditional Custodians is occurring simultaneously." It will be critical how the outcomes from these consultations are folded into the history.

This is clearly a very complex site from an historical perspective, so AGHS's interest in seeing a more advanced draft was flagged.

### Royal Exhibition Buildings (REB) and Carlton Gardens, World Heritage Environs Area (WHEA) draft World Heritage Strategy Plan

The draft Review of the World Heritage Strategy Plan was released in mid July for anyone to view and respond to. Submissions must be made to the Heritage Council on or before the 14th September.

This background review found that the 2009 Strategy Plan has been generally successful in conserving and protecting the World Heritage values of the REB & Carlton Gardens through managing and controlling development within the WHEA through Local Policies and Design Development Overlays. The review revealed a range of gaps, omissions and risks which are required to be addressed through revisions and updates to the Strategy Plan and associated statutory policy implementation framework.

AGHS is currently considering a response.



Image: Royal Exhibition Building, 1926 : courtesy State Library of Victoria

### Landscapes at Risk article

Responding to a request from the national committee, Vic Branch prepared an historical perspective of the advocacy efforts associated with Wombat Park, to be published in the AGHS Journal.

The article highlights the various ways and means of advocating for a site over a long period of time. As is noted elsewhere, the future of Wombat Park remains unclear, both as new ownership has not been established nor the heritage registration process finalised.

Truly a work in progress.

### Kamesburgh Gardens

An approach was made from a former gardener at Kamesburgh, a large property on 6 acres in suburban Brighton, to establish what status the gardens surrounding this property held in AGHS.

The gardener started work there in 1980, ceasing work at Kamesburgh in 1996 when the property closed as a home for war veterans and was leased to a school by the local council. He states he has some records of the garden at earlier times in his private collection which sound intriguing.

Discussions are still in the early stages, but it is likely there will be some further research and an article emerging for all members to absorb the background to this impressive place.

# National Conference



Attend the 41st Annual  
AGHS National Conference  
**VIRTUALLY!** 10 - 11 Sept 2021



## JOIN US ONLINE

Our online conference will be held from Friday 10th September to Saturday 11th September. Those who register will receive a link and be able to watch the lectures and participate in question and answer sessions from the comfort of their own home or garden. The conference will be recorded and available for registered delegates to watch for a limited period of time at a later date.

Delegates who have switched from the event at Luna Park to the online conference won't need to re register. A confirmation email will be sent on Monday 30 August 2021.

For more information about the virtual conference please contact our national office on 0419 977 703 or by email on [info@gardenhistorysociety.org.au](mailto:info@gardenhistorysociety.org.au).

## VICTORIAN BRANCH COMMITTEE

**Chair & Secretary :** Wendy Dwyer  
**Vice Chair and Newsletter:** Lynda Entwisle  
**Treasurer:** Anna Long

**Committee members:**  
**Working Bee Coordinator:** Diana Ellerton

**Advocacy:** Trevor Pitkin  
**Garden Histories:** Tim Gatehouse  
**NT Landscape Reference Group:** Anthony Menhennitt  
**NMC Rep:** Wendy Dwyer  
**Catering Coordinator:** Annie Woodside

We meet on the 4th Tuesday of the month, 3.30pm - 6pm at Burnley Gardens, except for October when the meeting will be held on 3rd Tuesday of the month. We welcome members to join committee meetings at any time. If you wish to discuss opportunities to get involved please contact Wendy Dwyer [aghsvicbranch2@gmail.com](mailto:aghsvicbranch2@gmail.com), or contact a committee member. Go to our Webpage [www.gardenhistorysociety.org.au/branches/victoria/](http://www.gardenhistorysociety.org.au/branches/victoria/) for more news and updates. Contributions to the newsletter are always welcome and should be addressed to [aghsvic19@gmail.com](mailto:aghsvic19@gmail.com) with newsletter in subject line.

