



AUSTRALIAN
GARDEN
HISTORY
SOCIETY

Victoria Branch News



<https://www.nationalarboretum.act.gov.au>

MESSAGE FROM THE CHAIR

Dear Victorian Members,

Welcome to our November newsletter. As Victoria emerges from lockdown it is great that we can now enjoy our outdoor spaces with more family and friends and show off all the work we have undertaken in our gardens. We are looking forward to being able to run some face to face events to reconnect with our members.

It was wonderful to see eighty - five members and guests joining in for Helen Botham's Zoom lecture on "Governor La Trobe's Melbourne House and Garden." We thank Helen very much for presenting such an informative and well-researched lecture. If anyone is interested in purchasing the book Helen wrote about this subject, please email me for details. We look forward to Helen being able to show us many of the plants and

things mentioned when she is our tour guide for our visits to Bishopscourt, La Trobe's Cottage and Government House when these venues are permitted to re-open.

EVENTS

This month we have a tree - themed quiz to go with our final Zoom lecture for this year. On **Wednesday 25 November**, well known ACT member Max Bourke will speak on the topic: "**Out of the Woods – trees on trial and the evolution of Arboreta.**" See below for booking details.

On Tuesday 8 December at 5.30 for 6pm start we will have our traditional end of year **Walk and Talk.**

This year we will Picnic with the Patron Professor Tim

Entwisle in the newly - opened Arid Gardens in the Royal Botanic Gardens Melbourne. BYO picnic. This is a **FREE EVENT** but bookings will be required as numbers are limited due to COVID restrictions.– Please see below for further details.

We would like to thank you for your continuing support during this difficult year and we wish you and your family best wishes for the Festive Season and good health and happier times in 2021.

WENDY DWYER | CHAIR

Welcome New Members
Sandra Costa-McMahon,
Lorraine Beveridge, Adam Black, Justin Coote,
Frances Callinan.

EVENTS

Out of the woods - Tress on Trial and the Evolution of Arboreta.

an online talk by Max Bourke

Date: Wednesday November 25th
Time: Login from 5:30 pm for 6 pm start

Price: AGHS members \$5
 Friends of RBG Mel. & Cranbourne \$5
 Non-members. \$10

Booking Link:
<https://www.trybooking.com/BMGAF>

When you book on TryBooking you will receive a confirmation email with a zoom link. **Please retain this email to access the talk.**



Max will cover how arboreta were conceived in the 19th century, the part they played in tree science and their new role in conservation as evidenced by the National Arboretum in Canberra. Booking information will be in the next newsletter.



Max Bourke AM has worked as a scientist, journalist and environmentalist, and was awarded an Order of Australia (AM) in 2004 for contributions to conservation and Australia's cultural heritage. After an early career in agricultural research, Max moved into science journalism at the ABC and then into the Federal Public Service, where he became the first CEO of the Australian Heritage Commission. From there, he moved into environmental management and supporting further investment into agriculture. For over 40 years, Max has helped rehabilitate and care for 30ha of coastal NSW by establishing a private arboretum of Australian plants. Max has been Chair of the AGHS ACT, Riverina, Monaro Branch; Deputy Chair of the AGHS National Committee and he is the immediate past President of the Friends of the Australian National Botanic Gardens.



Christmas Walk & Talk

We are delighted to invite you to join Professor Tim Entwisle and your fellow members for a picnic in the newly opened Arid Gardens in the Melbourne Gardens, Royal Botanic Gardens Victoria.

The Arid Garden has been totally redesigned and planted to incorporate a major new collection donated by Robert Fields. The 3000 cacti and succulents were collected in the late 1930s during the an expedition to South America by German explorer and botanist Harry Blossfeld. The design, based on the cellular structure of an aloe and a nod to a classical parterre, is by Andrew Laidlaw who also created the popular nearby Guilfoyle's Volcano landscape. So, come and hear our Patron tell us about cacti, aloes, agaves and more, all plants suited to a warming and drying Victorian climate.

Date: Tuesday 8th December
Time: 5:30 for 6:00 start
BYO: Picnic, rugs, chairs, face mask and hand sanitizer.

MEMBERS ONLY FREE EVENT. HOWEVER, DUE TO RESTRICTIONS
 BOOKINGS REQUIRED
<https://www.trybooking.com/BMOHW>

NOVEMBER QUIZ

In keeping with this month's 'TREE' focus we have a quiz to test your knowledge of some 'Remarkable Trees' both locally and internationally. They all are quite old and share their history with that of their local people.



1. This tree is significant because of the history associated with it and because it has become a symbol and tourist attraction for the nearby town of Derby in Western Australia. It is reputed that its hollowed-out trunk was used as a lockup for Indigenous Australian prisoners in the 1890s.
2. This is the largest tree of its kind found in its home country of England, with an estimated age of 800-1000 years and a girth of 10 m. It is located in Sherwood forest and according to local folklore, it was where Robin Hood and his merry men slept.
3. In 1790, Major Hayman Rooke wrote about the tree in his book on Sherwood Forest. It thus became known as 'Major's Oak'. This tree is located in the private courtyard of a well-known club in Melbourne. It is significant because it is the largest specimen of its kind in Victoria according to the National Trust's register of Significant Trees.
4. Planted in 1938, this tree is located on a busy intersection in South Yarra and is significant at a State level for its aesthetic value, its presence as a landmark, and as an outstanding example of its species. According to the ABC, it is Melbourne's most emailed tree on the Urban Forest website. <http://melbourneurbanforestvisual.com.au>
5. By volume, this is the largest, single-stemmed tree on earth. It has a girth of approximately 103 m and soars to a height of 84m. and is located in a grove of similar trees. It is estimated to be 2,300 years old. The tree was named after the American Civil War general William Tecumseh Sherman, in 1879 by naturalist James Wolverton who had served under the general.
6. Located in the mountains of northern Lebanon, these 400 trees are a remnant of the forests that thrived here in ancient times. They are mentioned in the Bible over 70 times and the ancient Egyptians used their resin in mummification. King Solomon is said to have used their wood in the construction of the first temple in Jerusalem.

Answers at end of newsletter

ADVOCACY

P32675 St Kilda Road

- 25 LED installation screens and lighting upgrades This application by the City of Melbourne is a collaborative push with National Gallery Victoria to install electronic artworks on the centre verge opposite the NGV site. A letter expressing strong objection to the concept and the implementation proposals was submitted to Heritage Victoria, to all CoM councillors and their CEO, on 26th August 2020. HV granted the permit for this project (October 5th) with some conditions, principally a reduction in the period of the 'temporary' installation from 25 years to 5, and complete removal at the end of the project. Vic Branch subsequently submitted a letter to Heritage Victoria, with copy to the Heritage Council, expressing disappointment with the determination, and made several proposals to improve the engagement of the community in response to the five years of experiencing this project.

Fawkner Park Permit Determination by Heritage Victoria

- At a Council meeting in late 2019, the City of Melbourne resolved to request a review by the Heritage Council of the heritage permit refusal for works in Fawkner Park. The Branch made a submission to Heritage Victoria objecting to the proposal on the eastern side of Fawkner Park, which would result in an unacceptable detrimental impact on the cultural heritage significance of this site. In mid September 2020 Vic Branch made a follow up submission to the Heritage Council hearing which, after many delays, occurred on 2nd and 5th of October 2020. Heritage Council has 60 days to reach a determination so the outcome should be known by the end of November.

Royal Exhibition Building and Carlton Gardens World Heritage Management Plan Review

- Heritage Victoria has announced the availability of the Consultation Summary Report for the Royal Exhibition Building and Carlton Gardens World Heritage Management Plan review on the Engage Victoria website. The Consultation Summary Report outlines the findings of the community consultation held between 1 June and 27 July 2020. The intention of this community consultation was to understand community views in relation to aspects of site management that are currently working, not working or need improvement. It was also an opportunity to understand what members of the public value about the site, what they think is important to protect, and how they imagine the site in the future. To participate in the review process, members can visit and subscribe to the Engage Victoria website at <https://engage.vic.gov.au/rebcgreview>.

Camperdown Botanic Gardens and Arboretum

- In late 2018 the National Management Committee of the AGHS decided to provide a grant to the Camperdown Botanic Gardens and Arboretum Trust Inc for restoration work at their site. This involves the installation of two borders on the eastern edge of the main lawn and the eastern fence, with plantings informed by notes that accompanied William Guilfoyle's 1910 plan as a guide. The Trust has endured the long and complicated process to obtain the approval from Corangamite Shire Council, as the Committee of Management of the site, so that work can now be started, two years on. Grant funds will now be released by AGHS to begin this important work.

Mooleric for sale

Many members will be interested to know that the historic 1870s property of Mooleric, in Birregurra Victoria, is up for sale. As a place frequently visited on our Western District trips and, more importantly, as a well-loved working bee property, many members have fond memories of working in the Guilfoyle garden and enjoying its expansive views, lovely bluestone buildings and soaking up the history of the place.

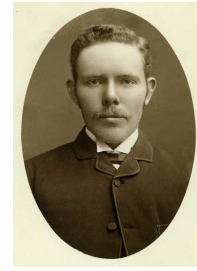
Owner MaryJane Crabtree extends her thanks to all members who provided assistance to her and her predecessor, Angus Ramsay over many years. She says " I'm immensely grateful to the AGHs for all their help, their warm and sometimes hilarious company, and above all, teaching a complete novice at least something about gardening."The property is for sale by EOI so hopeful buyers can demonstrate an understanding and appreciation of historic gardens. If you are interested or know someone who may be, check out the listing opposite in the domain.com website.



<https://www.domain.com.au/635-mooleric-road-birregurra-vic-3242-2016590419>
<https://www.domain.com.au/635-mooleric-road-birregurra-vic-3242-2016590419>

H.V. MCKAY MEMORIAL GARDENS STRATEGIC MANAGEMENT GROUP

Sometime ago I was asked to be the AGHS representative on this official Brimbank City Council group. This turned out to be a very fortuitous position, as I have known these gardens for the whole of my life. I grew up in Sunshine and my parents worked for “the factory” as it was known, that is, the Sunshine Harvester Works. My great aunt lived across the road from the Sunshine Gardens which were developed from 1901 as an amenity for the workers by the factory owner, Hugh Victor McKay. So as a child I would play in the Sunshine Gardens.



When I started working, I got an apprenticeship with Sunshine Council Parks and Gardens. As part of my training I had to spend quite a bit of time in the gardens in planting out seedlings and in maintenance. Eventually, as Assistant Superintendent, the gardens came under my management. So, I am able to assist in quite a positive way in the restoration of these gardens today.

The Council has proposed to upgrade and restore the gardens. This is not as we understand what restoration may mean, but to restore it back to a proper Edwardian garden. A Strategic Management Plan has been developed and is being implemented with much work being achieved so far. The bowling greens have been removed and the former site of the greens has been landscaped. An automatic watering system has been installed and is of immeasurable value as plants and lawns are kept watered. Some of the original path system has been returned, complete with the gravel and edging of the Edwardian style.

The Strategic Management Group comprises representatives from the local Chamber of Commerce, The Friends of McKay Gardens, The McKay Memorial Presbyterian Church, The Sunshine and District Historical Society, The Council Parks Manager and an AGHS representative. We meet about every three months or more often if required in normal times. This year has been quite unusual with Zoom meetings focusing on a review of the Strategic Management Plan to prioritise remaining works and further development. The Park Manager collated our views and presented an updated Strategic Plan for our approval.



<https://collections.museumsvictoria.com.au/articles/12362>

Unfortunately, under stage 4 lockdown all planting out had to cease and only basic maintenance was allowed. The Parks Manager has now allocated one person full time to maintain the gardens employed an apprentice also. A lot of work has also been done to put these gardens on to the Brimbank Tourist Map and advertise them to get the public to use them more.

The beauty of the involvement of AGHS is that it brings us to the forefront as a group who are prepared to do things. We have seen this with our garden histories, working bees and advocacy roles. Now it is expanded into other areas. Yes, we are in lockdown, but we are AGHS and lockdown doesn't stop us from doing things.

Anthony Menhennitt.

IN THE PIPELINE: When restrictions ease in 2021, Vic Branch is planning a “Wonders of the West” tour which will visit the HV McKay Memorial Gardens, Newport Lakes and creek restoration and the Williamstown Botanic Gardens.

40th Anniversary Garden Histories Project

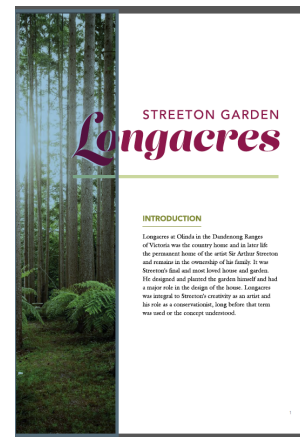
As part of the 40th anniversary projects undertaken by the Victorian Branch, and partly funded by the National Office, we are very pleased to announce that two of the three histories researched and written by committee member, Tim Gatehouse, have now been completed and are available to members to be downloaded for free from our website. We thank Tim for the enormous amount of time he has devoted to these histories and hope members and the public enjoy reading them.

UMINA - a rare example of a classic 1875 Italianate villa in Toorak which retains its original size and basic layout, with a largely intact garden plan and interesting social history. Since 1948, it has been the headquarters of the County Women's Association and was the venue for the Victorian Branch's 40th anniversary garden party in March this year.

<https://www.gardenhistorysociety.org.au/product/garden-history-the-garden-of-umina/>

LONGACRES - situated in beautiful Olinda, this was the home in later life of Sir Arthur Streeton, one of Australia's greatest landscape painters. The house, caretaker's cottage, studio/shed and grounds are much as Streeton left them and remain in the ownership of the family. He designed and planted the garden himself and it provided inspiration for many of his paintings and his role as an early conservationist. The property also was often visited by other eminent Australians involved in the arts.

<https://www.gardenhistorysociety.org.au/product/garden-history-longacres/>



QUIZ ANSWERS

1. Boab Prison tree: *Adansonia gregorii*
2. The Major Oak: *Quercus robur*
3. London Plane: *Platanus x acerifolia*
4. Golden Elm: *Ulmus glabra 'Lutescens'*
5. General Sherman: *Sequoiadendron giganteum*
6. Cedars of God: *Cedrus libani*



VICTORIAN BRANCH COMMITTEE

Chair & Secretary: Wendy Dwyer
Vice Chair & Newsletter: Lynda Entwisle
Treasurer: Anne Aston

Committee members:
Speaker/Tour ideas: Robyn Robins
Working Bee Coordinator: Diana Ellerton

Advocacy: Trevor Pitkin
Garden Histories: Tim Gatehouse
NT Landscape Reference Group: Anthony Menhennitt
NMC Rep: Wendy Dwyer
Catering Coordinator: Annie Woodside

We meet on the 4th Tuesday of the month, 3.30pm - 6pm at Burnley Gardens, except for October when the meeting will be held on 3rd Tuesday of the month. We welcome members to join committee meetings at any time. If you wish to discuss opportunities to get involved please contact Wendy Dwyer aghsvicbranch2@gmail.com, or contact a committee member. Go to our Webpage www.gardenhistorysociety.org.au/branches/victoria/ for more news and updates. Contributions to the newsletter are always welcome and should be addressed to aghsvic19@gmail.com with newsletter in subject line.