

*"The wonderful world of NZ
plants: what have we got and,
more to the point, where did
they come from?"*

Fiona Eadie



170 MILLION YEARS AGO



I quite like
it here

WAKE UP,
we're sinking!!







Brrr can't
we go back
to the tropics

Get that smile
off your face, it's
damned cold for us
you know!!





They are so cute –
both of them!!





© Martin Wallis

“I’m quite smart
really but
unfortunately
sometimes I
forget I can’t
fly”



Photo by Stephen Belcher

A lovely
young rimu,
planted by
Larnach





Are they
the same
thing?



Horopito
(*Pseudowintera*), a
true survivor!!



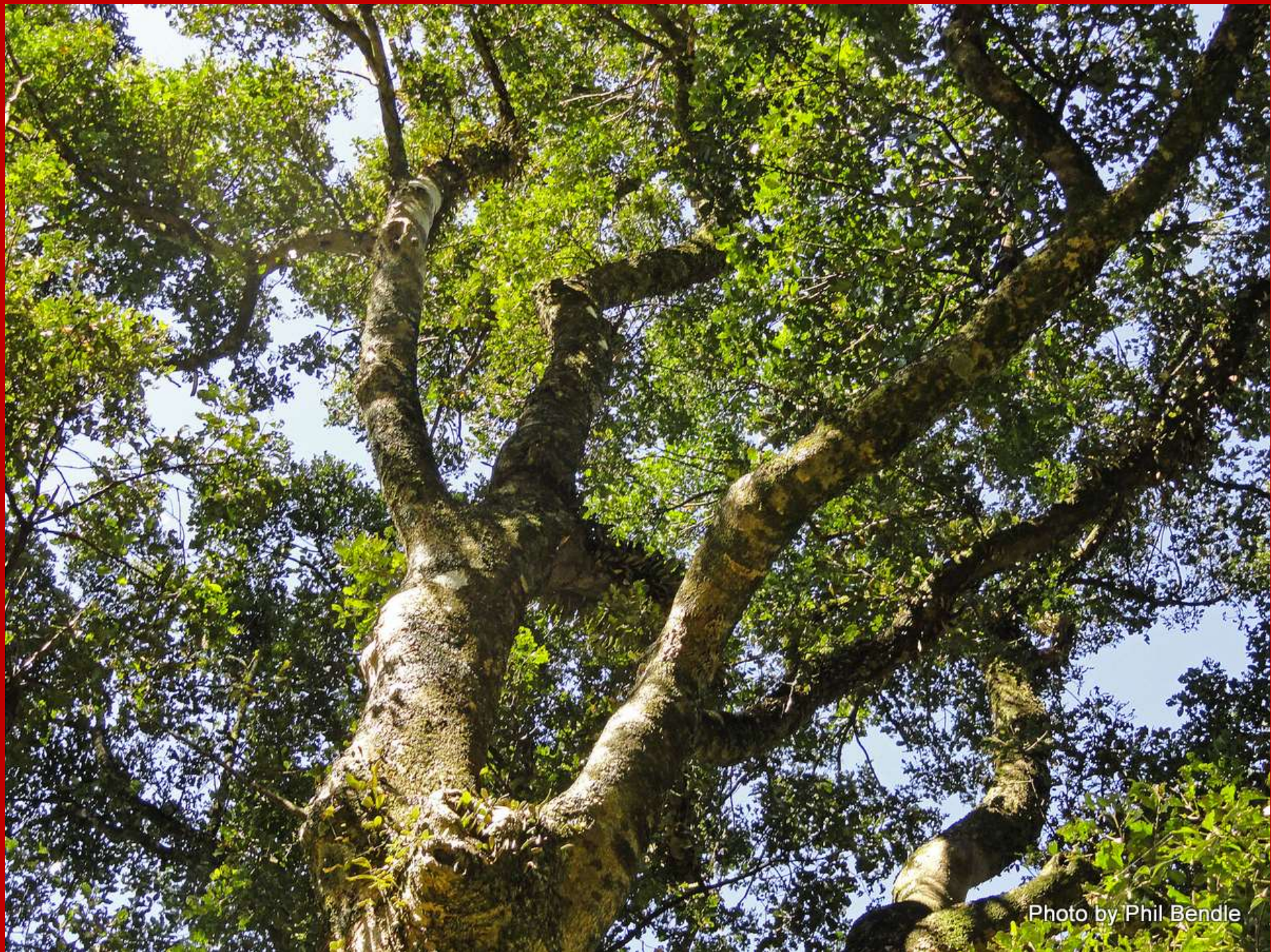
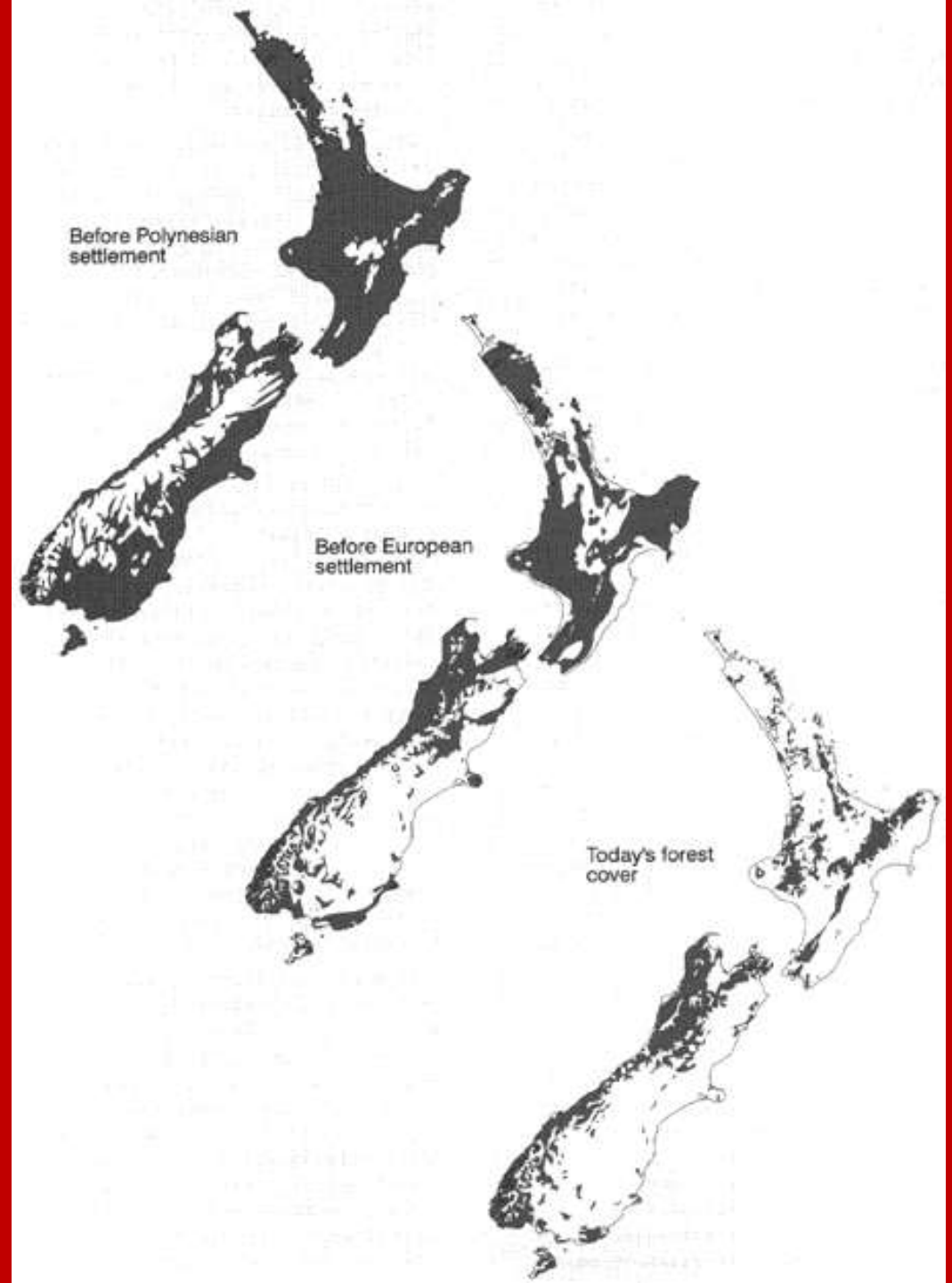


Photo by Phil Bendle

Man is pretty good at
some things but excels in
destroying trees!!

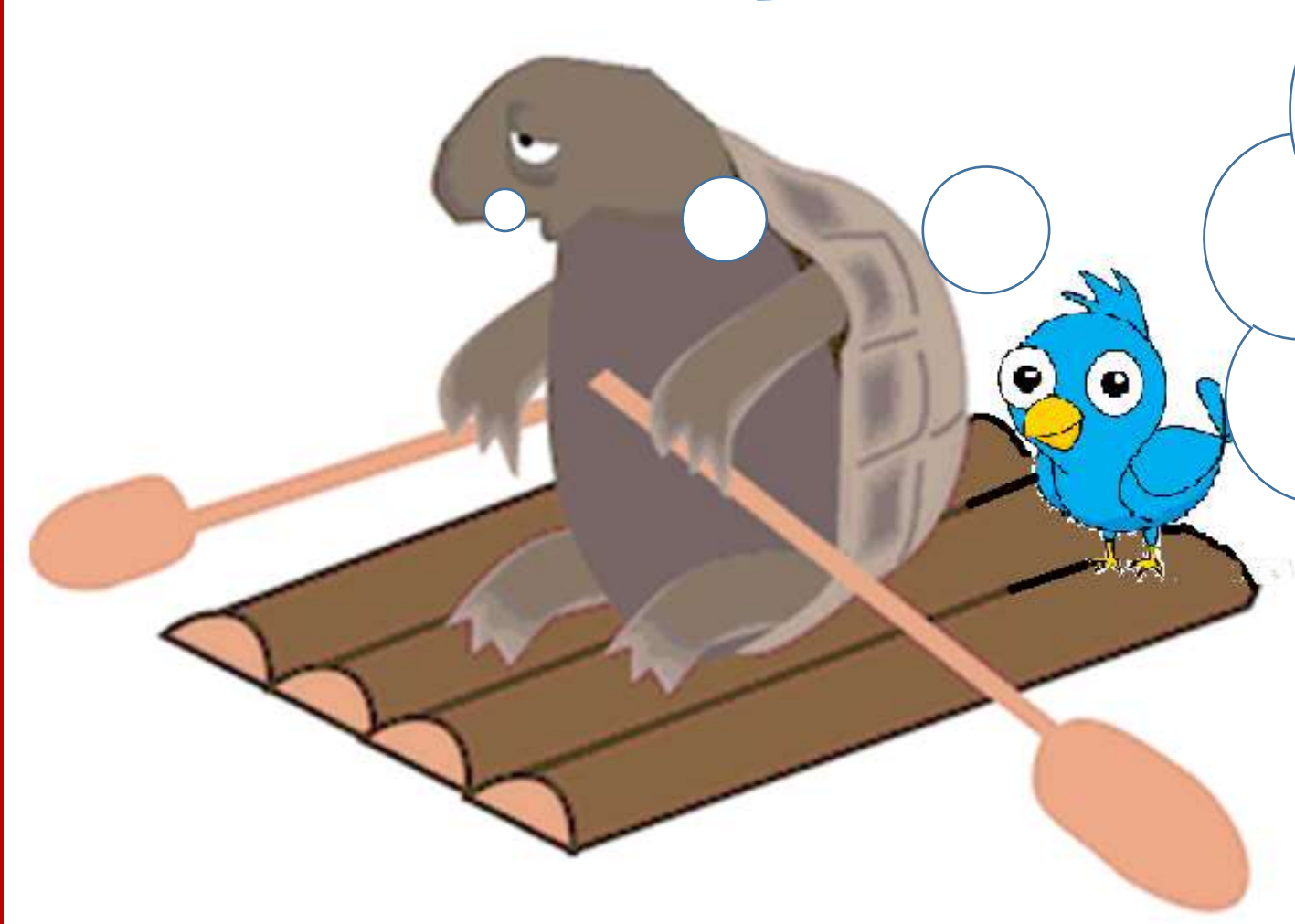




Still under debate if
this was here or not,
our magnificent kauri
trees!

Like you, we do a good line in
tree ferns





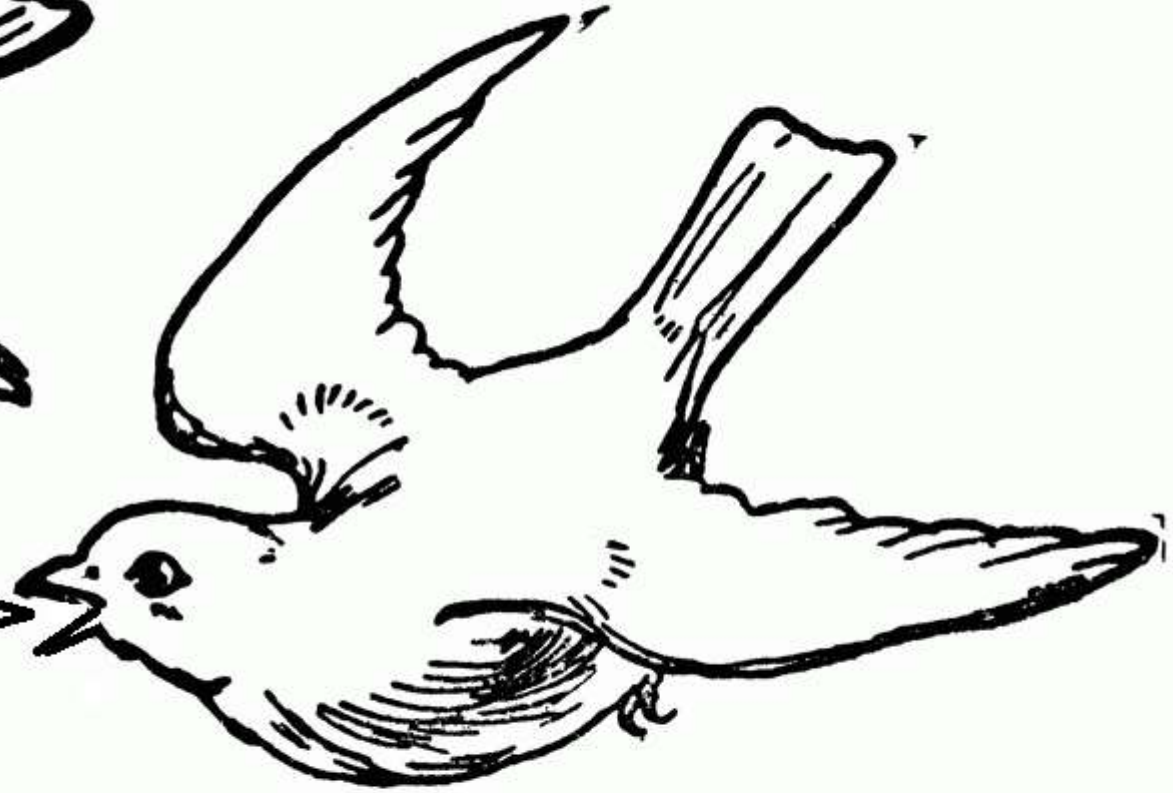
We should
have listened
to mum and
gone for a
walk!!

Butterflies, seeds
and fern spores for NZ
coming your way





I bet you 1 kg.
of seed that you
can't get that all
the way to NZ.





Our bats aren't big
but they are quite
cute!



Yikes, they
didn't tell me it was
this big!!!





Tecomanthe, an off
shore island plant
really



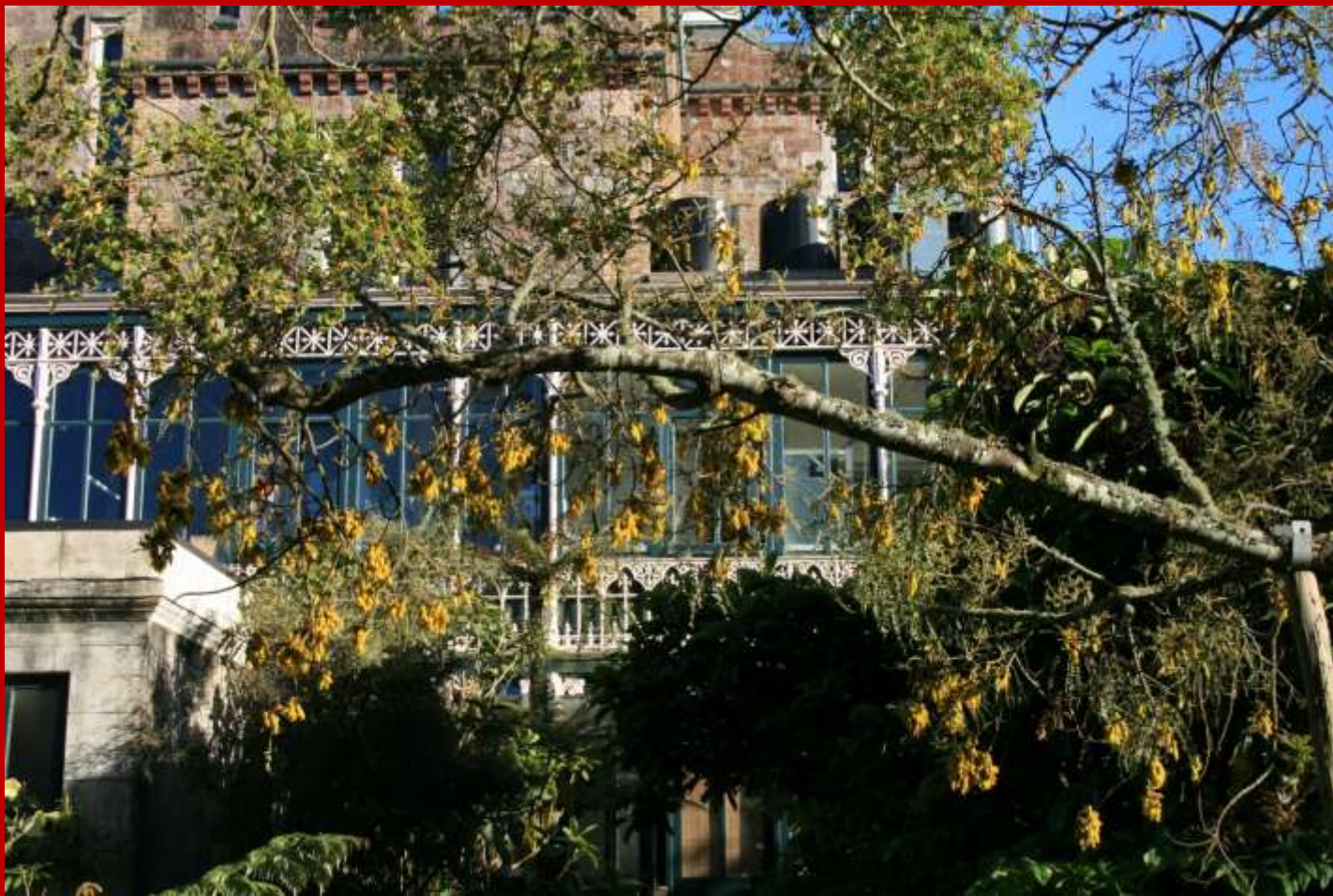
Clianthus, aptly
commonly called
kakabeak for the shape
of the flowers





Blue pollen,
how cute is
that!







Northern rata
planted at
Larnach Castle
by the man
himself

Our metros
diversified
widely



The birds love
flaxes but NZ
gardeners just
think they're
messy!





Europeans
create more
cultivars of
hebes than us....

.....and the same goes for our
clematis







... and our cordylines!!!



The
amazingly
huge female
parts
(stigmas) of a
ground cover
coprosma

We do a good line of
coprosmas



Eleven species of *Myrsine*
evolved from the first seed
30mya



We do structural plants
well. *Carmichealia*
stevensonii oozes with it

.....



... as does *Carmichaelia
williamsii*







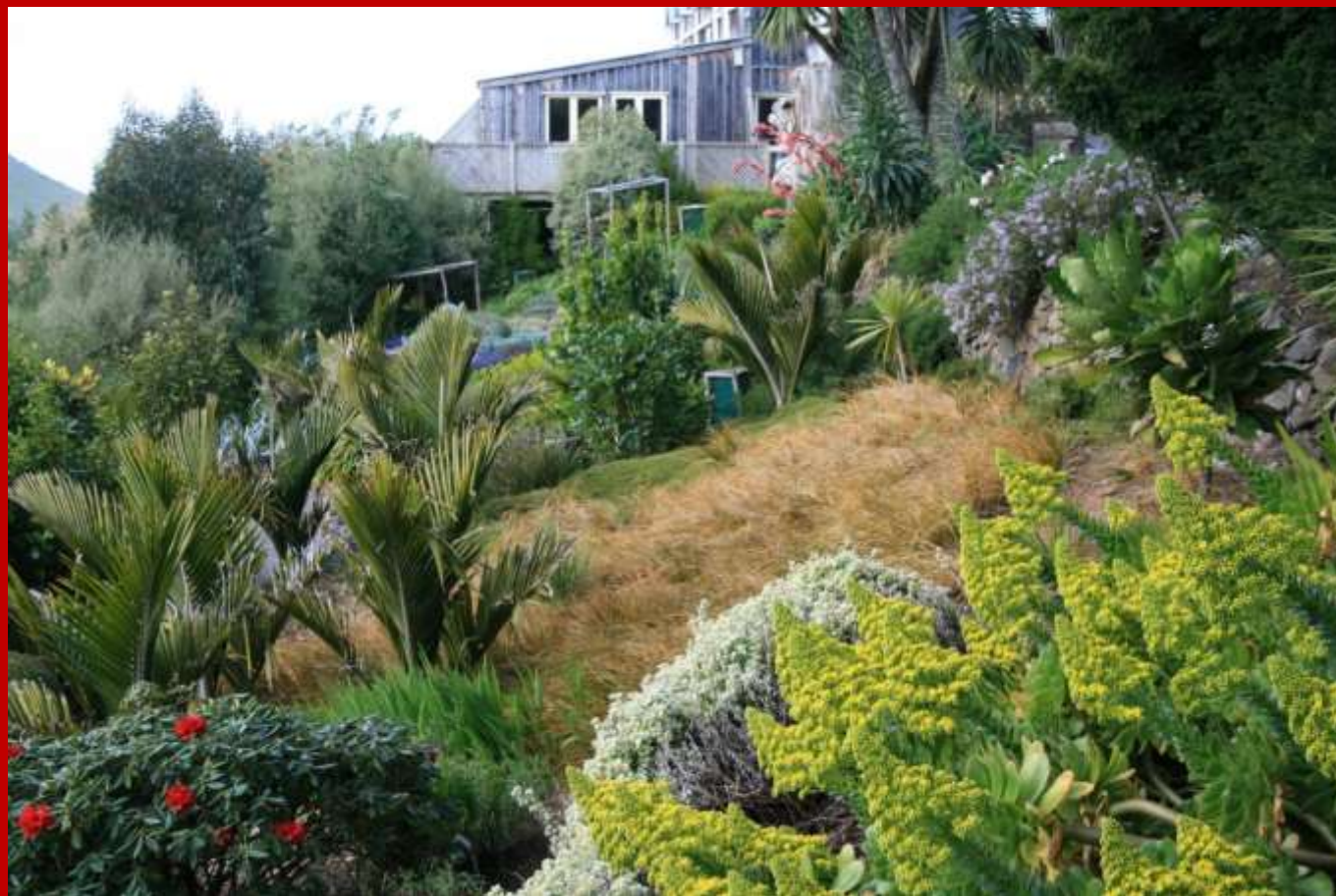
What affect
did the
moa have
on the
evolution
of our
plants?



Our twiggies are
great accent plants







AREA COMPARISON

ANTARCTICA, AUSTRALIA AND NEW ZEALAND



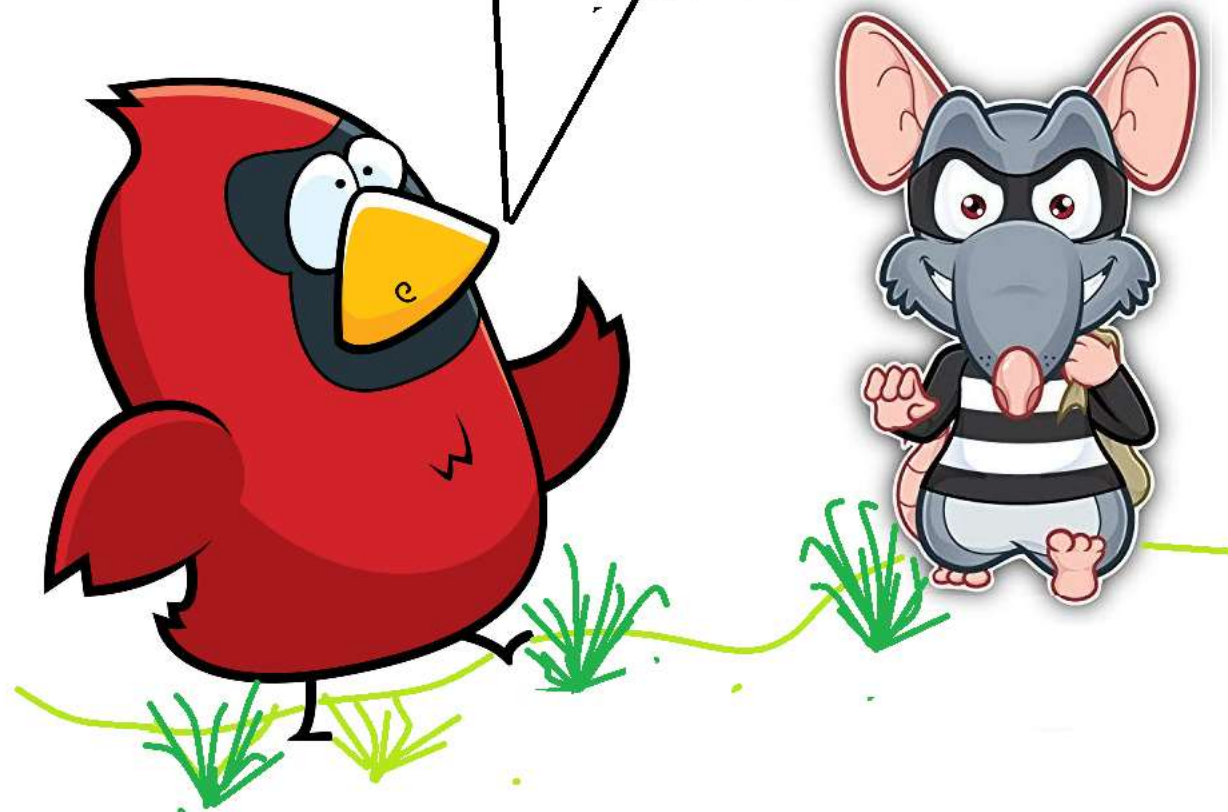
Australian Government
Department of the Environment,
Water, Heritage and the Arts
Australian Antarctic Division



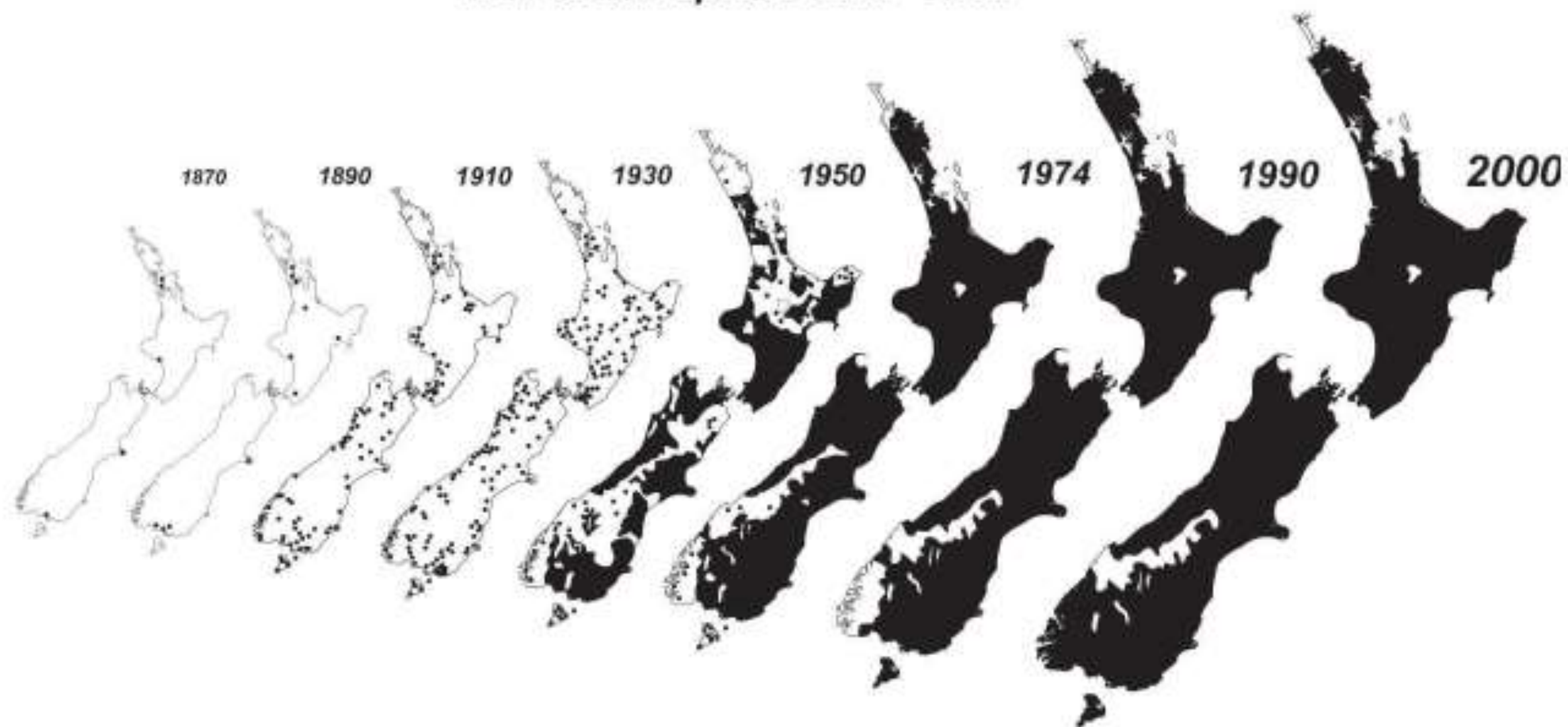
Lambert Azimuthal Equal-Area Projection
Produced by the Australian Antarctic Data Centre.
Antarctic coastline from ADD v5.
Published June 2009. Map Catalogue No: 13647.

We are smaller
than you but we
pack a punch

Hi,
you're new around
here aren't you? My names
Jo , what's yours?



NZ Possum spread 1870 - 2000





We'd like to
send all these
plant
criminals back
to where they
came from
back!



Come on guys



cc1eb44d0ca648a0805d2a3d20988a68uelp



..... how
desperate are
you.....



..... obviously
quite.....



..... the best you
could come up
with was adding
another star!





An Aussie
that found
it's full
potential
here



It's not only dogs that like a pat, so do plants, yes really!

**“The nation that destroys its
soil, destroys itself”**

**Franklin Roosevelt
(1882 – 1945)**

aste





..... and boy can we grow these



Sometimes mind you,
we all have a go at
growing what we
'should not' be able to





When it comes to texture, natives rule!



I do love them and





.... they come
in all colours

