

# Inflorescence

January 2022

The Newsletter of the Southern Highlands Branch of the AGHS



## Events for 2022

11 February at 3pm	Zoom meeting with Roslyn Burge
--------------------	-----------------------------------

## Tours and Other Events

**Tours** are still in a state of flux. Keeping our fingers crossed we are hoping to do the following tours this year:-

- Canberra Tour 5<sup>th</sup> April
- Kurnell Coach Tour 19 July
- Millthorpe Ramble Coach Tour 4-7 November

### Other Events

- Winter Solstice Seminar 5 June at Burrawang Hall
- AGM/Winter Seminar 21 August at Bradman Museum
- Car Trial 25 September
- Berry Self Drive in October
- National Conference in Tasmania 11-13 November
- Christmas Drinks 2 December

## Report from the Chair

Happy New Year! On behalf of the AGHS-SHB Committee I'd like to wish you a healthy and happy year ahead. We also hope we'll be able to interact with you at a scheduled event rather than only by email, *Inflorescence* or Zoom! We have events planned for almost every month of the year so hopefully the opportunity will still be available to interact personally before the year is out!

Despite postponing the Christmas Drinks at Quindalup from 3 Dec, 2021 to 7 Jan, 2022 we were thwarted yet again by wet weather! Hopefully as the weather dries out we will still be able to visit Quindalup. Deidre Hill is happy for us to visit her lovely garden at another time so we'll keep you informed of when that might be able to take place. I will keep the badges which many of you have ordered until such times as we can use them.

We were very excited that the exhibition at the Berrima Museum called *Gardens and Landscapes in the Southern Highlands - Then and Now* was open in mid-December due to the hard work of Bud Townsing and multiple others from the Berrima District Historical & Family History Society and the Bundanoon Photography Group only to be closed 2 weeks later! It was considered a high-risk venue for Omicron for potential visitors and the Berrima Museum was closed until the end of January. We have included in this issue a description of the exhibition which will entice you to visit when the Berrima Museum opens again!

We are showcasing the new heritage camellias at the Bowral Library and the history of these camellias in this issue so you can look forward to seeing them when they flower this winter. We've found photos of each of these heritage camellias so you'll be able to anticipate their blooms.

Our Long Lunch at the Centennial Vineyards on 11 February has been converted to an online Zoom presentation on the same day due to the rapid spread of the Omicron virus. Our guest speaker will be Roslyn Burge who has agreed to present her extensive experience in conducting oral histories with significant members of the AGHS including some from the Southern Highlands. If you wish to register please send an email to our IT Coordinator Jenny Woodwell at [woodwell@optusnet.com.au](mailto:woodwell@optusnet.com.au) before Monday 7 February.

Looking forward to seeing you all soon!

Regards, Ruth

## Advocacy

Laurel Cheetham is our representative on the Wingecarribee Shire Council Heritage Committee. She reports that the proposed heritage listings are progressing with a report being prepared for Council's Planning Committee to consider in February 2022. Potential items for inclusion continue to be added to the list to be considered. It is proposed to recommend that the work of the Heritage Committee be placed on public exhibition for community comments.

## New Members

A special welcome to the following new members:-

Jo Frecker of Bowral  
Frances Pope of Mittagong  
Kaye Tompson of Renwick  
Catherine Barlow of Berry  
Morgan Foster of Kangaloon  
Jill Swane-Hoorda of Burrawang

## Positions Vacant on our Committee

We are seeking two or three Committee Members. Sue Whitehouse is no longer available and we thank her for her input and enthusiasm. We are after an Event Co-ordinator, a Minute-Secretary and a General Committee member. If you wish to become part of the Committee, or think you can contribute in some way please contact Ruth Bailey on 0409126718 for a chat.

## Projects

### Gardens and Landscapes of the Southern Highlands Then & Now

Our main project for 2021 was the completion of the *Gardens and Landscapes of the Southern Highlands Then & Now* exhibition in the Williams Gallery at the Berrima District Museum. This project was planned a couple of years ago as a AGHS 40<sup>th</sup> Anniversary project but due to Covid, did not come to fruition.

Bud Townsing undertook to complete the project beginning in August 2021. Bud and Linda Emery of the Berrima District & Family Historical Society (BDHS) drew up a list of ten possible subjects for each of the large digital high-resolution screens in the Williams Gallery. They took a pragmatic approach concentrating on subjects they were familiar with and using photographs close to their fingertips as the Covid lockdown made new research difficult. The exhibition was completed with a “soft” opening in late December just as the Omicron Covid variant caused the Museum to close. We will keep you posted on when it is open again. It is likely the exhibition will run for about six months after it reopens.

Preparing this exhibition has been a cooperative effort between BDHS and AGHS Southern Highlands and is a good model for future co-operation. It has been made possible by the generous loans of exhibits, and contributions of stories, materials, and photographs from:

- *Highlife*, Tony Sheffield and Deborah McIntosh,
- BDHS Archives and members including, Linda Emery, Michele Woods, Philip Morton, Lyn and Harlan Hall, and Bud Townsing (also a member of AGHS),
- Joy Brown and the Bundanoon Photography Group,
- AGHS Southern Highlands members including Elaine Musgrave, Susan Hand, Ralph Suters, Jenny Woodwell, and Ruth Bailey,
- The Maureen Townsing Collection and the Keva North Collection, and
- The Fitzroy Falls Visitors Centre.



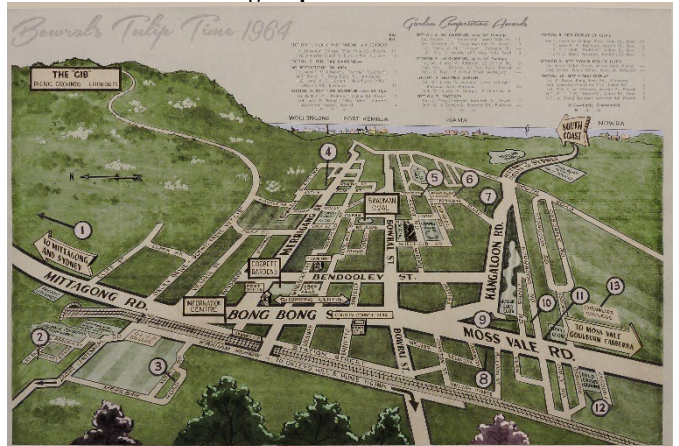
Personality pots made by Mashman's Pottery, they seem to be enjoying the exhibition, having a change from the Townsing Garden.



One of the display cabinets, Janet Cosh botanical specimens on the left, Louisa Atkinson books in the centre and an Elaine Musgrave original watercolour of a Cycad on the right.



Louisa Atkinson's riding crop – a real treasure from BDHS.



A view of Bowral from the 1964 Bowral Tulip Time Brochure, donated by Tony Sheffield.

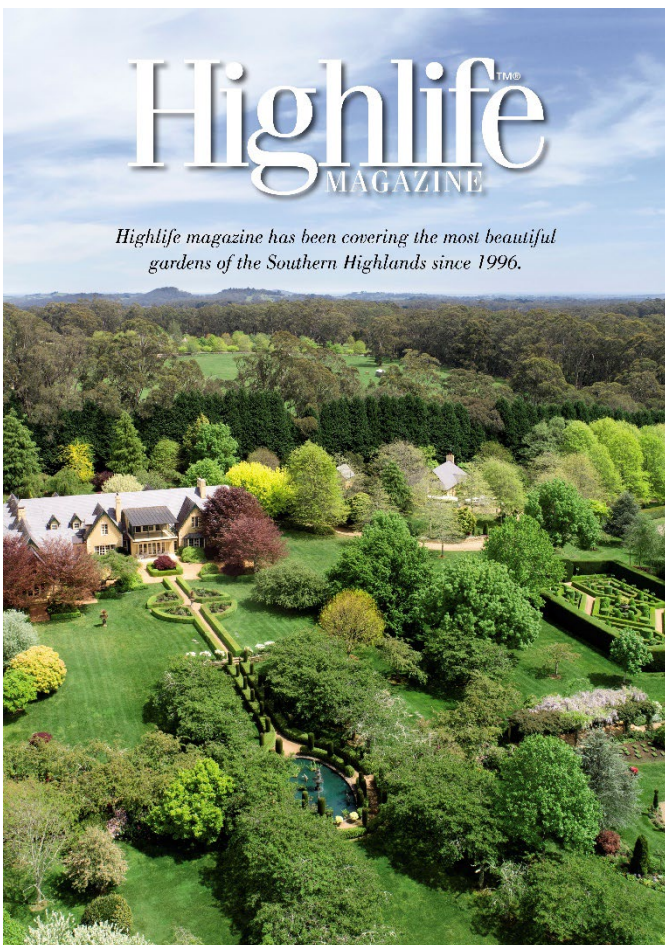


Members of BDHS having a tour of the exhibition on 20 December 2021.





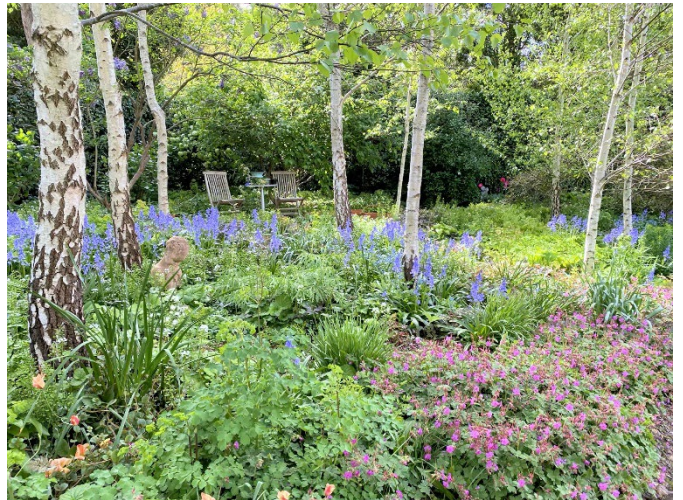
On Screen1 is *Commercial Gardens of Exeter* by Linda Emery. The above photograph shows Hyacinths at Walhallow, the Searl family property at Exeter. Photograph is courtesy Peg South and taken by her grandfather Martin Moore circa 1910.



On Screen 2 we have twelve gardens that have featured in *Highlife* over recent years with wonderful photographs by Tony Sheffield. The above view is of 5<sup>th</sup> Estate. The other gardens featured are Carisbrooke, Highdown, Chinoiserie, Jean Flora, Frensham/Sturt, Morton Views, Murray's Glen, Suncrest Burradoo & Watershed Bundanoon, Red Cow Farm, the Secret Garden and Upper Woodlands.



Screen 3 is the *Hordern Gardens of Bowral* by Linda Emery featuring Retford Park, Milton Park and Hopewood. The above photograph of Retford Park is by Joy Brown.



On Screen 4 is *Bangala A House and Garden In Bowral* by Susan Hand and Ralph Suters covering the restoration of their 1920 house and garden.

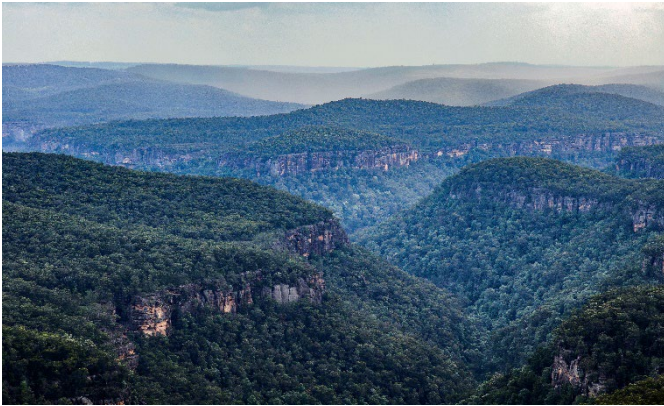


Showing on Screen 5 is 66 images from a circa 1860 sketchbook by Louisa Atkinson, by Bud Townsing courtesy the State Library of New South Wales.

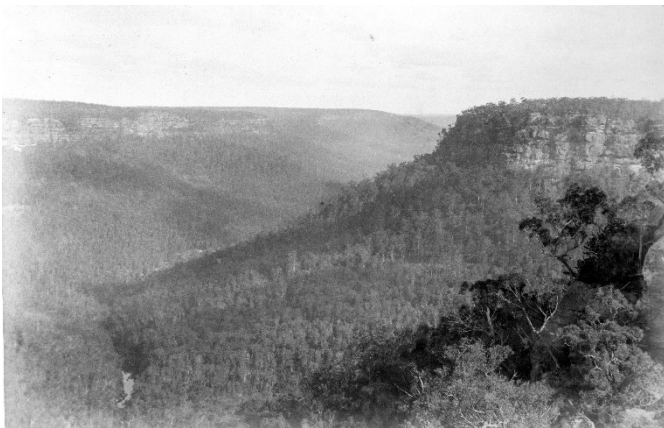




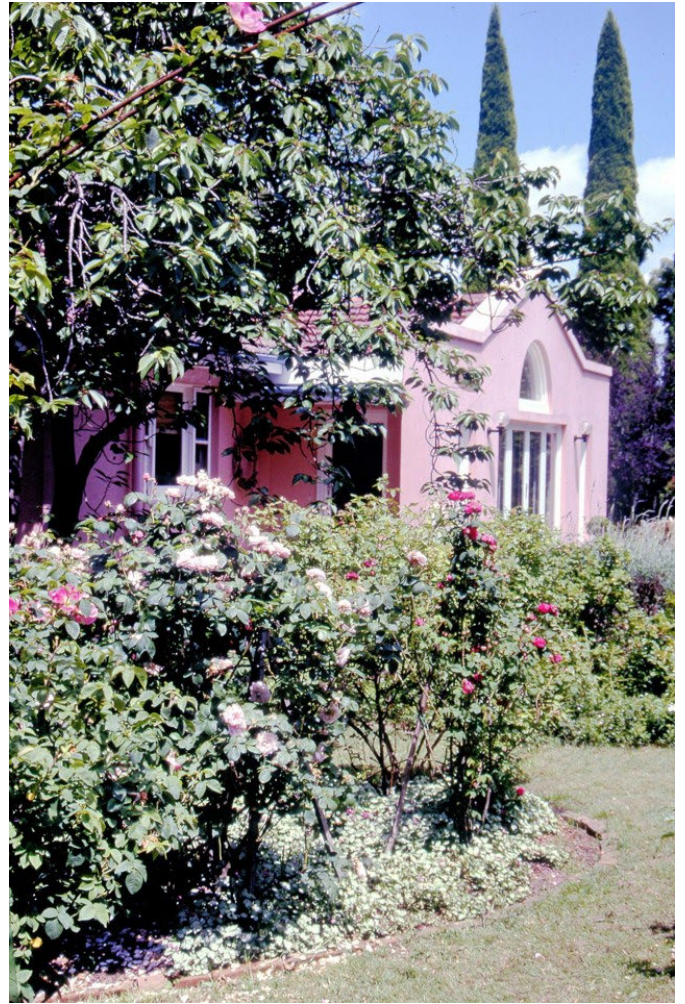
Screen 6 is *Three Talented Ladies* by Jenny Woodwell tells the story of Charlotte Atkinson (1796-1867), her daughter Louisa Atkinson (1834-1872) and Louisa Atkinson's granddaughter Janet Cosh (1901-1989). The above watercolour of Oldbury is by Louisa Atkinson.



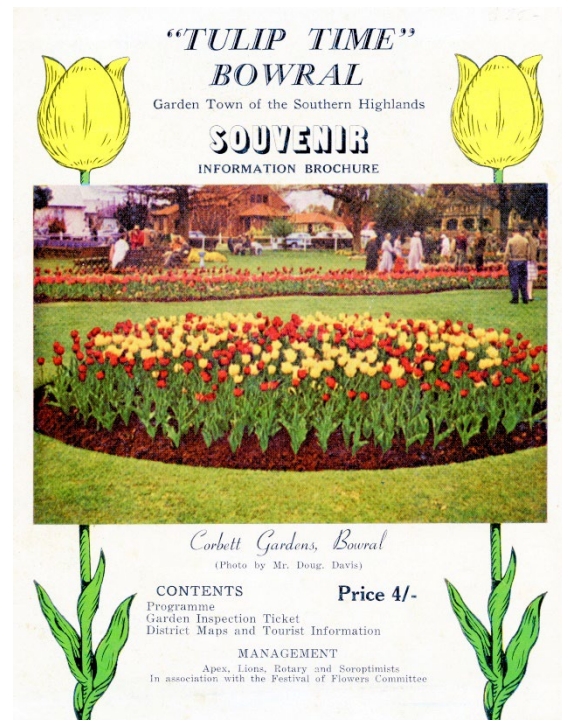
Screen 7 is *Beautiful Bundanoon* a collection of modern Bundanoon images by Joy Brown, Meg Nurse and Margie Thomas from the Bundanoon Photography Group. This photograph is courtesy Meg Nurse.



Screen 8 by Bud Townsing is a collection of recently discovered photographs of Bundanoon Gullies by William Augustus Nicholas taken in about 1890.



Screen 9, by Bud Townsing, is the story of Tim and Keva North and Yarrabin at 32 Kangaloon Road Bowral. The above photograph is by Keva North taken in about 1985 at Yarrabin.



Screen 10 is Tulip Time in Bowral prepared by Philip Morton; the above image is from the 1963 Tulip Time brochure.



## The Bowral Library Garden Restoration and Replanting Project

The Bendooley Place Precinct includes the Bowral Library, the Health Centre, the School of Arts, Stafford House, the old Bowral Town Hall and the Bowral Courthouse.



From left to the right is the Bowral Courthouse, Town Hall, Stafford House and the School of Arts. Photograph is from *Delightful Bowral* by Ebb Davis and is circa 1911.



The Courthouse was built by Alf Stephens Snr. in 1896. The Town Hall was built in 1888. Bud Townsing photograph 2016.



The rear of the Bowral Town Hall with the new camellias along the fence line between the Courthouse and the Town Hall.

Our thanks to Leonie Furber, Lyn Barrett of AGHS. Bill Parker of Camellias R Us, Dr. Stephen Utick of Camellia Ark Australia and, Greg Bray and Brooke Reid from Wingecarribee Shire Council for bringing this project to fruition.

Along the fence line between the Town Hall and Court House eight heritage *Camellia japonicas* have been planted as well as twenty-eight *Camellia sasanqua* Bonsai Babys. The *sasanquas* will form a hedge.

Shepherd & Co. opened a Branch Nursery in Bowral in 1870 to secure a regular supply of trees and plants for the colder districts.



Mick and Brooke of WSC planting the camellias 12 November 2021.

The heritage *Camellia japonica*'s are:-

1. Great Eastern appears in Shepherd & Co 1872 Catalogue probably a seedling of Chandleri, and may have originated at Camden Park. It is an Australian variety.
2. Elizabeth Bay originated as a large old plant growing at Elizabeth Bay. Relocated by Professor Waterhouse to the grounds of Sydney University in the late 1940's.
3. Lavinia Maggi, 1858, in Shepherd & Co 1870 Catalogue.
4. Lady Hope in Camellia Grove Catalogue 1944.
5. Mariana, 1866, in Shepherd & Co 1870 Catalogue.
6. La Pace, Italy, 1860.
7. Contessa Woronzoff, Italy, 1960.
8. Omega, USA, 1908.

Camellia information from the International Camellia Society and Shepherd & Co 1870 Catalogue.



Photographs of the heritage *Camellia japonica*'s are courtesy the International Camelia Society at:

<https://internationalcamellia.org>



**1. Great Eastern**



**2. Elizabeth Bay**



**3. Lavinia Maggi**



**4. Lady Hope**



**5. Mariana**



**6. La Pace**



**7. Contessa Woronzoff**



**8. Omega**

## Zoom Presentation 11 February to Replace Long Lunch

Due to the rapid spread of Omicron in the Southern Highlands, the Committee reluctantly decided to cancel the long lunch which was to be held at the Centennial Winery on 11 February and hold a Zoom instead on the same day. Roslyn Burge graciously agreed to give her presentation on the AGHS oral history collection on Zoom. An email has been sent to all members and friends advising them of the starting time and registration with Jenny Woodwell our IT Coordinator at woodwell@optusnet.com.au. Registration is free.

## Voices of the National oral history collection

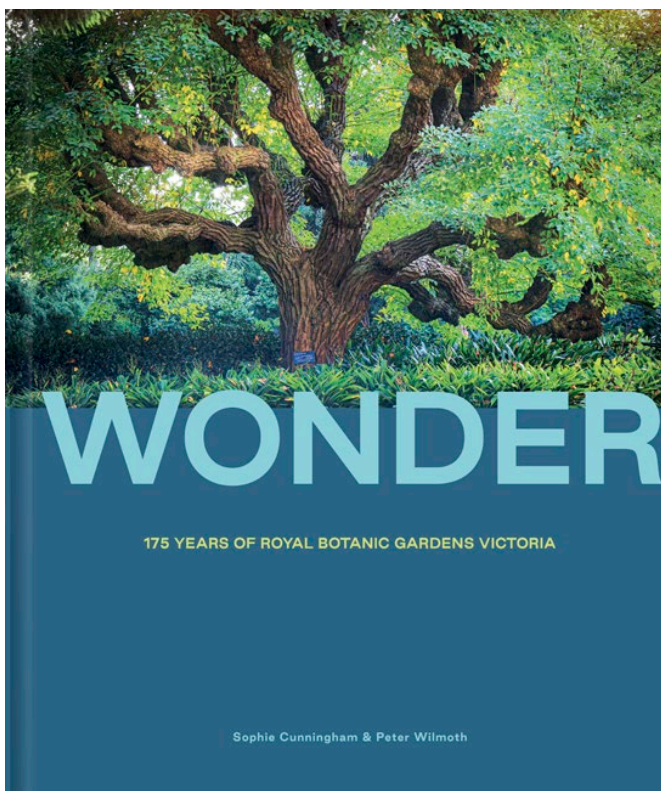
The Australian Garden History Society formally commissioned its first oral history interviews in 2002, just before its jubilee, to record the recollections of people associated with the genesis and development of the Society. Now there are more than 60 interviews in the National Oral History Collection representing each state and the ACT. The changing focus of the interviews reflects the mission and scholarship of the Society, individuals' engagement with domestic, public and historic gardens, and some of the challenges the Society has faced. Through the voices of the interviewees this paper explores their associations with the Society and garden history and how their voices reflect four decades of the Society's history.

## Roslyn Burge



Roslyn Burge is a Sydney-based public historian; her work includes commissioned histories, exhibitions and oral history projects. As a significant aspect of her practice, oral history projects include those commissioned by individuals, libraries, corporate and community entities, as well as projects she has initiated in her community (Goat Island communities during the 1940s, *Mondo & More: the 20thC Greening of Leichhardt* and the *Rozelle Hospital Oral History Project*). Roslyn also recorded some of the Society's oral history interviews and whilst a member of the National Management Committee from 2013-2019 she was Convenor of the Oral History Committee. She is a member of National Trust (NSW) Landscape Conservation Committee and her publications include *No Peacetime Cinderellas: 60 years of the women of the War Widows' Guild of Australia in NSW*, *Callan Park: Compassion and Conflict in the Asylum* and *Broughton Hall: Brought to Life*.

## Book Review



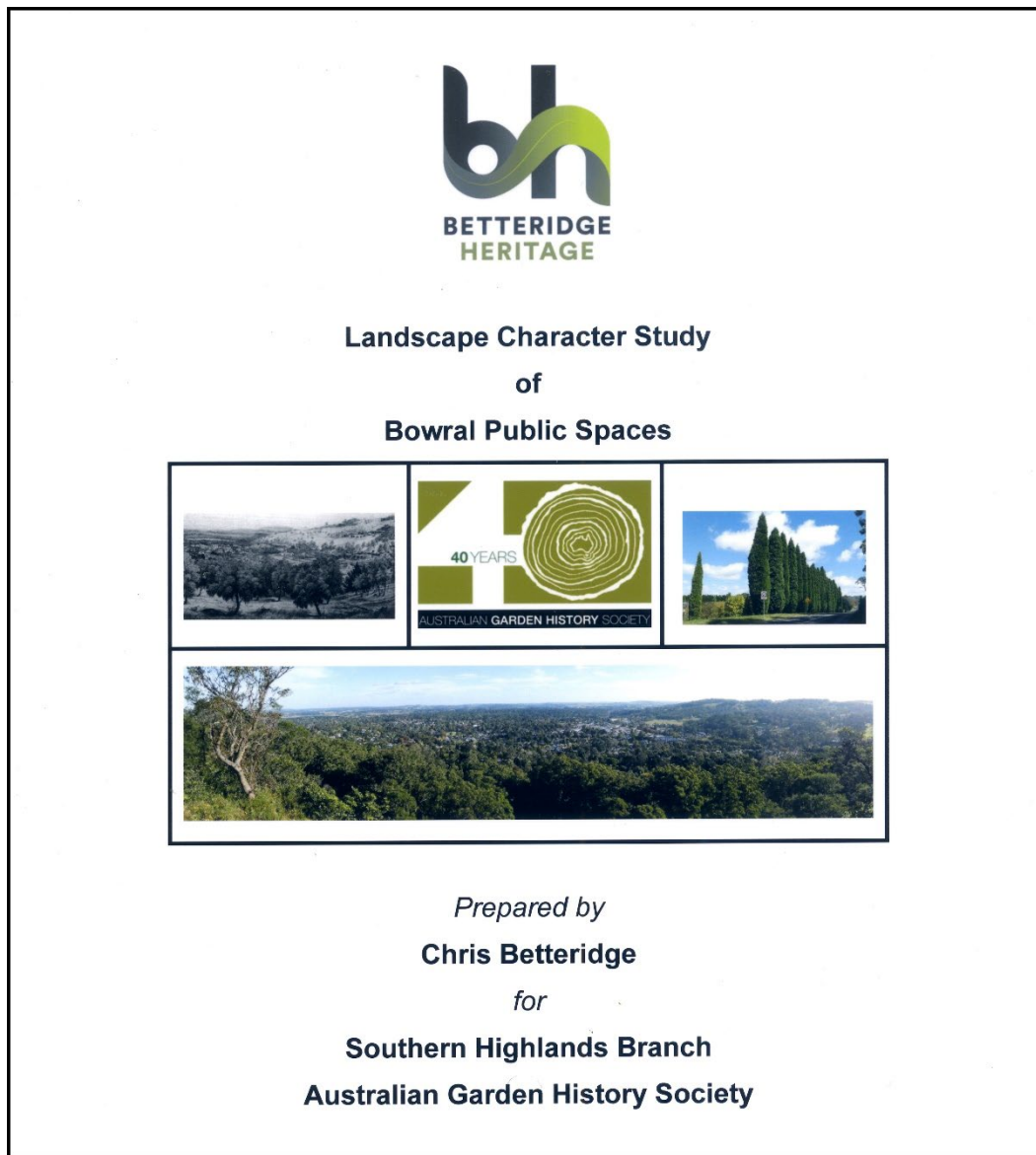
A new book on the Royal Botanic Gardens Victoria has been reviewed by Sandra Pullman: "As a Melbournean, it was a pleasure to review this amazing book, *Wonder 175 Years of Royal Botanic Gardens Victoria* by Sophie Cunningham AM and journalist Peter Wilmoth. Two authors could be problematic; however, Cunningham and Wilmoth write together seamlessly, and their words are backed up with stunning photographs by one of Australia's leading photographers, Leigh Henningham.

This book celebrates 175 years of a beloved institution, the Royal Botanic Gardens of Melbourne (RBG). It traces the history of the Melbourne and Cranbourne gardens through an eclectic mixture of stories about the designers and gardeners, the patrons, volunteers, scientists and visitors like you and me, who have visited or worked in the gardens over the last two centuries. These stories add to our understanding of how the RBG Melbourne and Cranbourne began, what Aboriginal connections there were and are today, and what the scientists who work at the gardens discover that adds to our knowledge of this continent, Australia."

Chair, Secretary and Events Co-ordinator	Ruth Bailey
NMC Representative	Lyn Barrett
IT Co-ordinator	Jenny Woodwell
Minutes Secretary	
Treasurer	Lynda Cowley
Tours	Ray Bradley
WSC Heritage Rep	Laurel Cheetham
Editor/Research	Bud Townsing

Contact us by email at: [aghs.sh.info@gmail.com](mailto:aghs.sh.info@gmail.com)





We now have printed copies of Chris Betteridge's excellent *Landscape Character Study of Bowral Public Open Spaces* (the Study) available. If you prefer a printed copy for your library shelf, the cost is \$75 plus postage. The book is A4 size, soft cover, 150 pages with a good selection of photographs – good value for \$75. Electronic copies as a PDF file are free. Please contact Ruth Bailey if you are interested in a printed copy or the PDF version.

The key recommendations of the Study for the conservation of Bowral's cultural landscape character are:

- A Council-sponsored community workshop to assess the success of Council's tree management plans and strategies and recommend updating where necessary.
- A Canopy Replenishment Strategy to address climate change, conserve character, and minimise risks, with clear targets for tree survival rates and canopy coverage.
- A proactive maintenance program for vegetation in public places.
- Adequate human and financial resourcing by Council to enhance and maintain Bowral's cultural landscape and its character.
- Promotion of Bowral's cultural landscape for its major tourism value and cooperative marketing with the town's other attractions and festivals.

It is hoped that the Study will help to focus Bowral community and Wingecarribee Shire Council attention on the special character of Bowral's cultural landscape and to assist in its ongoing conservation, enhancement, management, and interpretation.