



# Ipswich 2023 CONFERENCE PROGRAM

29 September to  
1 October 2023

## Digging into the past – above and below the Limestone Hills

The City of Ipswich with a population of over 233,000 is in sub-tropical southeast Queensland about 40 kms inland from Brisbane. New suburbs are growing fast, bringing younger people to the area. Ipswich, once down-at-heel, and environs have become attractive because of more affordable land, excellent transport, high-quality health services and liveability.

In the 19th and 20th centuries Ipswich was a coal mining and industrial town. The wealth this brought can be seen in the city's fine public buildings, houses and gardens. In the mid-19th century Ipswich was proposed as Queensland's capital.

The first European settlement in the Ipswich area was in 1827 during Brisbane's time as a convict settlement. Limestone was discovered on the Bremer River and a small party of convicts was sent to make lime for mortar. The settlement was initially known as Limestone Hills, then Limestone before being named Ipswich after the English town in 1843.

The geological riches of coal are key to Ipswich's history and its fortunes. The early thriving industrial base led to the construction of Queensland's first railway line and the immense Railway Workshops.

Ipswich was built on the floodplain of the Bremer River. The river also contributed to Ipswich's mixed fortunes. It was entirely navigable to Brisbane but has regularly flooded, the first and worst recorded flood of the modern era being in 1893.

Local Indigenous populations lived with flooding. The non-Indigenous population from 1893 onwards would take a more interventionist approach, settling in the low-lying areas, sometimes leading to catastrophe.

**The conference speakers will explore these themes:**

Evolution of the landscape and its geology

Responding to the river

The beauty and diversity of original landscape

Gardening and cultural landscapes in the sub-tropics within in an industrial city – remnants of early public gardens and the challenges of climate

# Venue and program

28 September 2023

Early registration  
from 3pm to 6pm  
at the Ipswich  
Civic Centre

The Conference is being held at Ipswich Civic Centre, 50 Nicholas Street, Ipswich

There will be a full day of lectures on Friday. On Saturday, lectures in the morning followed by site visits on Saturday afternoon and a full day of visits on Sunday in and around Ipswich.

## Day 1 Friday 29 September

### The geology of Ipswich and its effect on the cultural landscape

Our conference theme *Above and below the Limestone Hills* will invite our speakers to talk about the geology of Ipswich, in particular coal as a resource and how its mining has affected the landscape. Speakers will explain how the layout of the city was influenced by the river and address the challenges facing a city built on a floodplain.

**KEYNOTE SPEAKERS** **Dr Nick Cook**, geologist, and **Dr Margaret Cook**, historian and author of *River with a City Problem*; and **Danny Keenan**, Ipswich City Council Heritage Officer are some of those who will speak.

Other speakers will talk about both Indigenous and introduced plants in and around Ipswich. This includes looking at the work of the botanist and explorer Allan Cunningham (1791-1839; "the King's Collector for the Royal Garden Kew"). We explore local plant foods and the use of landscape to beautify a built environment.

**WELCOME DRINKS** at Ipswich Art Gallery from 5pm to 7pm

## Day 2 Saturday 30 September

**CONFERENCE COMMENCES** at 9am

### Cultural landscapes and gardening in the sub-tropics

Speakers will delve into Ipswich history, including the historic public gardens of Queens Park, the gardens at the original Ipswich Railway Workshops.

We will address how subtropical plant species have contributed to the cultural landscape of Ipswich and examine the future challenges confronting gardeners in the subtropics.

Speakers include **Catherine Brouwer**, Landscape Architect and Planner, **Dr Geraldine Mate**, Principal Curator of History Industry Technology at Queensland Museum, and **Arno King**, Landscape Architect.

**At the close of the formal Conference proceedings, Western Australia members will be invited to introduce delegates to the 2024 Conference.**

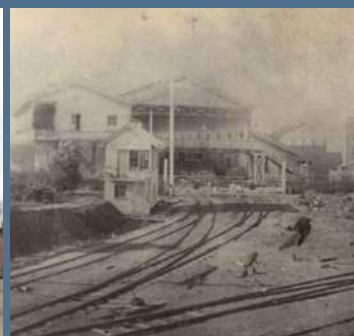
### LECTURES-ONLY PROGRAM

Delegates may attend the lectures-only program which includes full day lectures on Friday and half day Saturday. Morning Tea and Lunch on Friday and Morning Tea on Saturday are included, and delegates will receive a conference bag.

### VIRTUAL CONFERENCE PROGRAM

A virtual option of lectures-only will be available via video conferencing. The virtual participants will be able to chat with other virtual delegates and ask questions of speakers through a moderator.





## Saturday afternoon

- Delegates will visit the heritage-listed Queens Park Gardens (built 1864-1960: <https://apps.des.qld.gov.au/heritage-register/detail/?id=602356>) with its subtropical Fern House and significantly intact limestone stonewalling constructed as part of a Depression Relief scheme for Ipswich during the 1930s. Nearby the Walter Burley Griffin incinerator constructed in the 1930s is just one of six remaining in Australia.
- We then board buses at 3:45pm to travel to the heritage-listed North Ipswich Railway Workshops, a campus of the Queensland Museum, for drinks and the Conference Dinner. We have arranged for the Museum to be open for delegates.
- The Conference Dinner will be held in the original Ipswich Railway Workshops Dining Room (constructed 1911).



# Day 3 Sunday 1 October

## Garden visits

On Sunday, delegates will visit historic private gardens in and around Ipswich for the full day.  
**Lunch and refreshments are included.**



## Optional Days

### TOOWOOMBA VISIT

**Thursday 28 September 2023  
(before the Conference)**

- **Toowoomba City** will be looking its best. This is Carnival of Flowers time!  
<https://tcof.com.au/>
- Delegates depart and return Ipswich by coach for a day trip. Visits include historic **Spring Bluff Railway Station** <https://springbluff.com.au/>  
**Boyce Gardens** <https://apps.des.qld.gov.au/heritage-register/detail/?id=601311>  
**Laurel Bank Park** <https://apps.des.qld.gov.au/heritage-register/results/?q=laurel+bank+park> and **two private gardens**. Drive along streets with historic houses and remaining old trees.

TOOWOOMBA  
CARNIVAL  
of FLOWERS



Queensland Rail Historical collection

The Queensland Conference offers two Optional Day visits

### SCENIC RIM VISIT

**Monday 2 October 2023  
(after the Conference)**

Departing Ipswich at 9:00am, and returning by 5:00pm, delegates travel by coaches to visit historic **Coochin Coochin Station** located south of Boonah township. Building at Coochin Coochin commenced in the 1840s and is situated within grounds consisting of trees of historic significance. The homestead is heritage listed <https://apps.des.qld.gov.au/heritage-register/detail/?id=600034>.

The tour includes visiting a successful **Fasssifer Valley farming vegetable and flower growing venture** and one of the historic townships within the Valley





## Pre and post conference tours



### PRE-CONFERENCE

**Monday 25 September to Wednesday 27 September**

### POST-CONFERENCE

**Tuesday 3 October to Thursday 5 October**

**(DEPENDING ON NUMBERS)**

The Queensland Conference Committee will conduct the tours, led by Ann Wegener. Ann has held a long interest in historic properties in southeast Queensland. Tour accommodation will be at Spicers Hidden Vale Luxury Retreat at Grandchester ([spicersretreats.com/retreats/spicers-hidden-vale](https://spicersretreats.com/retreats/spicers-hidden-vale)) from where the tour will visit historic private properties and places of special relevance to garden lovers within the wider rural communities beyond Ipswich, including the Somerset Region near Esk.

- The pre-conference tour will commence in Brisbane at Roma Street Parklands at 10 am and conclude in Ipswich.
- The post-conference tour commences in Ipswich and ends in Brisbane at the Roma Street Parklands at 4.30 pm.

## Conference location and travel advice

- Ipswich is located about 40 km west of Brisbane City
- Delegates arriving at Brisbane Airport can travel to Brisbane Central via Airtrain [www.airtrain.com.au](http://www.airtrain.com.au)
- Ipswich is accessed from Brisbane City by the suburban rail network <https://jp.translink.com.au/plan-your-journey/journey-planner>
- **Delegates will need to organise their own transport to and from Ipswich**

## Weather

- Expect warm days and cooler nights
  - Sunblock and hats are recommended
  - Comfortable and sturdy walking shoes will be needed for all garden visits
- <https://www.accuweather.com/en/au/ipswich/13972/september-weather/13972>

## Important information

All delegates must be AGHS members (virtual delegates excepted).

Full conference delegates attending garden visits must travel on conference coaches and be fit and capable of walking at least 3km to 4km unassisted. Please note that some gardens may involve uneven ground, sloping terrain, stairs and steps. If you require assistance, please make arrangements for a personal carer to be included in your booking and notify AGHS by email. Alternatively consider attending the conference as a lectures-only delegate.

## Accommodation

Ipswich accommodation – delegates make own arrangements

### Oaks Ipswich Aspire Suites

1 West Street, Woodend. Ipswich Ph: 1300 660 467

<https://www.oakshotels.com/en/oaks-aspire>

This is the closest accommodation to the conference centre and near to Ipswich Railway Station. 5 minute walk to conference venue.

Motel-style rooms and self-catering suites available. No restaurant or breakfasts served.

### Quest Ipswich

57–63 Warwick Road, Ipswich Ph: 07 3813 6000

[www.questapartments.com.au/properties/qld/ipswich/quest-ipswich/overview](http://www.questapartments.com.au/properties/qld/ipswich/quest-ipswich/overview)

Serviced apartment-style hotel rooms with kitchenettes.

Located 1 km from conference venue uphill.

Public transport bus service available to Ipswich Central.

### Best Western Ipswich

51–55 Warwick Road, Ipswich Ph: 07 3202 3111

<https://www.ihmi.com.au/>

Recently renovated older-style motel, budget friendly.

Located 1 km from conference venue uphill. Public transport bus service available to Ipswich Central.

### Country Motel Ipswich

250 South Station Road, Ipswich. Ph: 07 3202 4622

<https://www.countrymotelipswich.com/>

Quiet location situated approximately 15 minute drive from the conference venue.

Italian restaurant on site and breakfasts.

**OTHER ACCOMMODATION OPTIONS** are available via internet travel booking sites.

## Refund Policy

### Conference Bookings

- **Prior to and including 16 July 2023**  
90% refund
- **From 17 July to 20 August 2023**  
60% refund
- **From 21 August 2023**  
NO REFUND

## Booking

**Bookings open Monday 1 May 2023 online or by post.**

Online booking is preferred, and no preference will be given to postal bookings. Note that AGHS conferences tend to book quickly.

We prefer payment by EFT to save on bank charges.

**ONLINE BOOKINGS** Online conference bookings can be made via the AGHS website.

<https://www.gardenhistorysociety.org.au/product/aghs-conference-registration-2023/>

**POSTAL BOOKINGS** Download the booking form (next page). Return a completed booking form with payment details to:

- AUSTRALIAN GARDEN HISTORY SOCIETY  
Att: Lisa Nutting – National Executive Officer  
PO Box 479 Somers Victoria 3927

Postal registrations will not be processed until Monday 1 May and thereafter



# Booking Form

**FULL CONFERENCE** \$940 x \_\_\_\_\_ = \_\_\_\_\_

Includes lectures, garden visits, conference dinner, lunches, morning and afternoon teas, conference bag, coaches to and from garden visits and conference dinner.

**LECTURES-ONLY** \$350 x \_\_\_\_\_ = \_\_\_\_\_

Includes lectures, two lunches, morning teas, conference bag.

**VIRTUAL CONFERENCE** \$200 x \_\_\_\_\_ = \_\_\_\_\_

**CONFERENCE DINNER**

**Lectures-only delegates and/or extra guests** \$ 175 x \_\_\_\_\_ = \_\_\_\_\_

**OPTIONAL DAY Toowoomba – 28 September 2023** \$175 x \_\_\_\_\_ = \_\_\_\_\_

Includes garden visits, morning tea, lunch and coach transport.

**OPTIONAL DAY Scenic Rim – 2 October 2023** \$175 x \_\_\_\_\_ = \_\_\_\_\_

Includes garden visits, morning tea, lunch and coach transport.

**Pre- and post- Conference Tours**  
Please note, this year's tour prices reflect significant increases in accommodation and travel costs.

**PRE-CONFERENCE TOUR (25–27 September 2023)**

The pre-conference tour will commence in Brisbane at Roma St Parklands at 10 am and conclude in Ipswich. Includes two nights' accommodation, meals, garden entries and coach transport.

Twin share or double room \$1500 pp x \_\_\_\_\_ = \_\_\_\_\_  
Single supplement \$500 pp x \_\_\_\_\_ = \_\_\_\_\_

**POST-CONFERENCE TOUR (3–5 October 2023)**

The post conference tour commences in Ipswich and ends in Brisbane at the Roma St Parklands at 4.30 pm. Includes two nights' accommodation, meals, garden entries and coach transport.

Twin share or double room \$1500 pp x \_\_\_\_\_ = \_\_\_\_\_  
Single supplement \$500 pp x \_\_\_\_\_ = \_\_\_\_\_

**TOTAL** \$ \_\_\_\_\_

**PAYMENT (EFT PREFERRED)**

**EFT** AGHS BSB **012 006 ACC 2166 72228** RECEIPT NO.  
USE AS REFERENCE: initial + surname + conf23

**Credit Card**  Visa  Mastercard

Card number

Expiry   /   CVV

Card holders name \_\_\_\_\_

**Cheque** CHEQUE ENCLOSED (Payable to Australian Garden History Society)

## Privacy policy

Please refer to AGHS privacy policy at <https://www.gardenhistorysociety.org.au/privacy-policy/>

Delegates' names and State will be included in the conference materials (delegates list), unless you opt out.

## Name

Title \_\_\_\_\_ First name \_\_\_\_\_

Surname \_\_\_\_\_

Preferred name for lanyard \_\_\_\_\_

Membership number \_\_\_\_\_

Dietary requirements \_\_\_\_\_

Postal address \_\_\_\_\_

State \_\_\_\_\_ Post code \_\_\_\_\_

Phone \_\_\_\_\_ Email \_\_\_\_\_

I do not want my name included in the conference delegate list

## NAMES OF OTHERS INCLUDED IN THIS BOOKING

Title \_\_\_\_\_ First name \_\_\_\_\_

Surname \_\_\_\_\_

Preferred name for lanyard \_\_\_\_\_

Membership number \_\_\_\_\_

Dietary requirements \_\_\_\_\_

I do not want my name included in the conference delegate list

## EMERGENCY CONTACT

Name \_\_\_\_\_

Relationship to delegate \_\_\_\_\_ Phone \_\_\_\_\_

## FOR FURTHER INFORMATION

Contact AGHS office phone: 0419 977 703 email: [info@gardenhistorysociety.org.au](mailto:info@gardenhistorysociety.org.au)